



**KA-NI NANGHPAM MABYIN LAM**

# **SAWK SAGAWN HPUNG**

Wunpawng Mungdan  
hte Lahta Sannung

---

# **SUMTANG**

---

**2018 - 2019**

**Ginjaw Ka-ni Nanghpam Pat Jasan Komiti, KIO**

26<sup>th</sup> June, 2019



**KA-NI NANGHPAM MABYIN LAM  
SAWK SAGAWN HPUNG**

Wunpawng Mungdan hte Lahta Sammung

(2018 – 2019)

**SUMTANG**

Ginjaw Ka-ni Nanghpam Pat Jasan Komiti,  
KIO

26<sup>th</sup> June, 2019

## MALAWM NI

1. Acronyms .....	LIKA MAN	<b>5</b>
2. Lawnglam ginchyum .....		<b>6</b>
3. Shachyen ai hte sumtang a yaw shada lam .....		<b>8</b>
4. Shingdu labau .....		<b>9</b>
5. Sawk sagawn ladat .....		<b>12</b>
6. Survey galaw ai ginra lamu ga sumla .....		<b>13</b>
7. Sawk tam mu lu ai lam ni .....		<b>18</b>
- Section 1: Ka-ni chyang hkai ai lam .....		<b>18</b>
- Section 2: Ka-ni hpraw galaw shapraw lam .....		<b>31</b>
- Section 3: Yama galaw shapraw ai lam .....		<b>33</b>
- Section 4: Nanghpam Hpaga galaw ai lam .....		<b>35</b>
- Section 5: Nanghpam Lusha jailang lam .....		<b>38</b>
- Section 6: Tara Upadi shadut ai lam .....		<b>40</b>
- Section 7: Manghkang shayawm ai lamang hte .....		<b>42</b>
Dawn dabang lamang ni		
- Section 8: UNODC a Myen mung na Nanghpam .....		<b>43</b>
sawk sagawn data ni hte shingdaw yu ai lam .....		<b>45</b>
8. Ginchyum, Dinglik ai hte ningmu jaw ai lam .....		<b>46</b>
9. Appendix .....		<b>47</b>



## ACRONYMS

<b>BGF</b>	= Border Guard Force
<b>CSWs</b>	= Commercial Sex Worker
<b>CSOs</b>	= Civil Society Organizations
<b>DIFC</b>	= Drug Issue Fact-Finding Commission
<b>EAO</b>	= Ethnic Armed Organization
<b>IDPs</b>	= Internally Displaced Persons
<b>KII</b>	= Key Informant Interview
<b>KIA</b>	= Kachin Independence Army
<b>KIO</b>	= Kachin Independence Organization
<b>KTV</b>	= Karaoke Television
<b>PTTs</b>	= Pyi-Tu-Tsit (Burma militia)
<b>UNODC</b>	= United Nations Office on Drugs and Crime

## LAWNGLAM GINCHYUM

---

Ndai sumtang gaw KIO a Drug Issue Fact-finding commission kaw nna, Kachin State hte Northern Shan State kata na Ka-ni nanghpam mabyin manghkang hpe sawk sagawn htawng madun da ai re. Sawk sagawn bungli hpe 2018 July shata kaw nna 2019 March shata du hkra Ginra 19 kaw sawk sagawn hpung 19 hpe hpaw let n bung ai amyau bawsang, magam bungli hte asak pang hku nna masha marai 9,953 hte dinghkrai san htai galaw da ai re. Sawk sagawn ai kaw na mu mada lu ai lam ni gaw:

- 2018 – 2019 Ka-ni hkai ladaw, Ka-ni hkai hectares yawng (10,110.63) kaw na Kachin State kata Ka-ni hkai hectares 6,918.23 hte Northern Shan State kata, Ginwang Daw 5 kaw na Ka-ni yi hectares 3,192.4 re.
- 2018 ning UNODC a Myen mung Ka-ni yi sumtang kaw na Kachin State kata Ka-ni yi hectares 3,400 re ai hte DIFC kaw nna sawk sagawn lu ai Kachin State kata Ka-ni yi hectares yawng (6,918.23) rai nna, htam mi grau law jat wa ai. Myen mungdan ting hte Kachin state kata hta Ka-ni hkai shadang grau grau nna yawm wa ai lam hpe UNODC a ngang ngang kang kang madi madun ai gaw n tsen hpa rai nga ai.
- Kachin State kata Ka-ni hkai shatut ai hpe Danai, Shingbwi Yang, Sadung hte Kanpaiti ginra kaw sha n re ai sha UNODC kaw nna 2018 ning survey n lu hta shinggyin ai Putao hte Sumprabum mayan de mung Ka-ni hkai shatut nga ai re.
- Ka-ni hkai ai shara yawng gaw Myen hpyen dap, BGF hte Pyi-tu-sit (Myen hpyen dap, dap awn daju kaw nna matsun uphkang ai) ginra ni kaw rai nga ai hpe UNODC kaw nna gaw KIA hte EAOs ni a uphkang ai ginra kaw Ka-ni hkai shadang grai tsaw ai hku nna madi madun ya nga ai.
- Kachin State kata Ka-ni yi law dik gaw Waimaw Ginwang Daw a sim-praw maga na Kanpaiti (4,651.67 hectares) hte Sadung kaw rai nna, dai ginra hta BGF 1002, BGF 2003, Pyi-tu-sit wuhpung ni hte Sadung hte Pangwa Myen hpyen dap Byu-har dap jung da ai re. Lahta Sattung (Kachin Sub-state) hta Ka-ni hkai ai ginra ni gaw Namhkam, Kuthkai (Kutkai), Kunlung (Kunlong), Tang Yan hte Lashu (Lashio) Ginwang Daw ni hta rai nna, dai ginra ni hta ginra Pyi-tu-sit ni rai nga ai Panse, Kawng Hka, Lung Htang, Shau Haw, Mungji (Mungsi), Tang Yan Pyi-tu-sit wuhpung ni hte Kunlung (Kunlong) Laksan Balik ni uphkang ai shara ni re. Ndai ginra de Myen Hpyen Dap a Dap Nu nan yu reng uphkang nga ai re.

- Ka-ni hpraw hte Yama jak rung law malawng gaw lahta Saming (Kachin Sub-state) kata kaw rai nna, Myen Hpyen Dap a uphkang ai kata na Pyi-tu-sit uphkang gaiwang kaw rai nga ai. Kachin State ginra de Ka-ni nanghpam law malawng du lung wa ai gaw Muse – Namhkam mahkrun hku nna mung, Myen – Miwa mung jarit mayan mahkrun hku nna mung, Mandalay lam mahkrun hku nna mung re hpe mu lu ai.
- Ka-ni nanghpam hkai, galaw shapraw ai hte dut ginlen ai lam yawng gaw Pyi-tu-sit wuhpung ni, Myen hpyen dap hte Balik magam gun ni kaw nna ahkun hkangse hta la mayun kumhpa la sha nna, makawp maga madi shadaw ya nga ai re. Ka-ni hpraw hte Yama jak rung madu law malawng gaw miwa mung na Ka-ni nanghpam hpaga lauban ni rai nna, shanhte hpe Myen hpyen dap, Pyi-tu-sit wuhpung ni hte BGF wuhpung ni kaw nna makawp maga ya nga ai. Ka-ni nanghpam lu sha ai hte loili dut sha ai ni sha rim hkrum nna, arang kaba hpaga galaw ai ni rim hkrum ai lam n nga ai.
- 2014 – 2016 ladaw hta, Wunpawng Amyu sha Ka-ni nanghpam Pat Jasan hpung ni kaw nna Ka-ni yi hkyen jasan ai lam, galaw shapraw ai hte dut ginlen ai lam ni hpe shayawm lu ai. Raitim, Myen asuya magam gun ni kaw nna, Pat Jasan magam bungli a ntsa mara tam jahkrit shama ai hpang Ka-ni nanghpam hkai, galaw shapraw ai hte dut ginlen lu sha jailang ai madang grau tsaw wa ai. Ndai hpe yu yang Asuya a tara upadi chying ring lam n nga ai hte mayun kumhpa la sha ai lam ni a majaw, Ka-ni nanghpam manghkang hpe grau byin shangun ya nga ai.

Myen asuya kaw nna, Ka-ni nanghpam hte seng ai tara upadi ka-up lam hpe tang du hkrang pru hkra lit la galaw ra ai hte Ka-ni nanghpam bungli kaw na mayun kumhpa sha nga ai Myen asuya magam gun tsang hte tsang hpe mung ja ja ahkyak la jasan kau ra na hte nanghpam shalet shalai ai magam bungli ni hta makawp maga madi shadaw galaw nga ai Myen hpyen dap hte Pyi-tu-sit, BGF wuhpung wuhpawng ni hpe jahkring kau lu na matu ahkyak la ra na re.

Matut nna, UNODC zawn re ai Mungkan wuhpung wuhpawng ni kaw nna mung, Myen asuya a uphkang masa kata hta byin nga ai Ka-ni nanghpam manghkang ni a teng man ai lam ni hpe lu la hkra tang du du sawk sagawn nna, Myen asuya hpe sadi jaw ai lam, Ka-ni nanghpam pat jasan lam hta n-gun dat na matu shadut ai lam ni galaw ra ai.

## SHACHYEN AI HTE SUMTANG A YAW SHADA LAM

---

Ndai sumtang a yaw shada lam gaw, Kachin State hte lahta Sannung (Kachin Sub-state) kata Ka-ni nanghpam hkai, galaw shapraw, dut ginlen ai hte lu sha jailang ai lam law jat wa ai a madung ningpawt lawnglam ni hpe htawng madun lu na hte Ka-ni nanghpam manghkang hpe tengman ai hku hparan lu na mahkrun ladat hpe tam la lu na matu re.

Kachin State hte lahta Sannung (Kachin Sub-state) kata na Ka-ni nanghpam mabyin tatut sat lawat hpe hta shinggyin la lu na matu KIO Ginjaaw Ka-ni Nanghpam Pat Jasan Komiti kaw nna Ka-ni Nanghpam Mabyin Lam Sawk Sagawn Hpung (Drug Issue Fact-finding commission) hpe 2018 ning January (18) ya shani hpaw shabawn dat sai re.

DIFC sawk sagawn hpung kaw nna Ka-ni hkai ai lam, galaw shapraw ai hte shalet shalai, dut ginlen lu sha jailang ai lawnglam ni hpe 2018 July shata hte 2019 March shata htum laman shiga hta shinggyin la lu sai. Shiga hta shinggyin ai ginra ni gaw Ka-ni nanghpam manghkang grau sawng dik ai Kachin state hte lahta Sannung (Kachin Sub-state) kaw re. Shiga lawnglam (data) ni hpe ginchyum ai dinglik ai hte sumtang ka ai ladaw hpe 2019 April kaw nna May shata du hkra galaw la lu sai.

Ka-ni nanghpam pat jasan magam bungli galaw sa wa ai lam hta dingbai dingna kaba byin nga ai lam ni hpe gara hku yeng seng kau lu na ladat ni hte, pat jasan bungli hpe grau awngdang hkra galaw sa wa lu na matu yaw shada sawk tam ai lam re.

## SHINGDU LABAU

---

KIO gaw 1964 ning kaw nna Ka-ni nanghpam pat hkum sa wa na polisi hpe jahkrat hpang sai. Wunpawng buga kata de 1970 ning hpang daw kaw nna Ka-ni hkai, hpaga galaw ai hte lu sha ai ni lani hte lani grau law lai wa sai. 1980 ning grup-yin kaw nna Ka-ni hpraw (No.4) lu sha ai ni grai law lai wa sai. Mare buga ni hte Ja maw Lungseng maw ginra ni hta Ka-ni hpraw (No.4) lu sha htu marawp ai ni grau sawng lai wa sai.

Dai zawn Ka-ni nanghpam lu sha htu marawp ai majaw, ramma ni laika hpaji n lu sharin la ai, hpaji n chye kanbau bungli lu na matu yak wa ai, ja gumhpraw sutgan sum ginlut matsan jamjau ai, dinghku hten bya ai, kap bra ana lu nna nta masha ni si htum mat ai shadang tsaw wa ai. Mare kahtawng ni hta asak prat naw ram ai ni si ai lam law jat wa ai majaw masha jahpan grit yawm wa ai, hkyuk htawng rawng ai law mat nna shawa bungli gunhpai na masha pyi n nga mat ai madang du ai majaw pat jasan bungli hpe amyua sha yawng a magam lit hku galaw ra wa ai. Dai majaw 1988 ning hta Ka-ni hpraw (No.4) gasat shamyit masing kaba jahkrat nna n-gun dat gasat shamyit lai wa sai. Hpakant Sabaw maw ginra ni hta Ka-ni hpraw (No.4) lu sha ai ni hpe shatsai kau ai masing ni du hkra galaw sai re.

1991 April 15 ya shani KIC kaw nna Opium Free State ndau ai hte Ka-ni hkai ai hpe pat hkum ai Tara aming shapraw sai. Matut nna 1991 ning October 15 ya shani Ka-ni nanghpam dut mari shalai shalet hpaga galaw ai hpe pat hkum ai KIC Tara aming kahtap shapraw sai. Raitim, Ka-ni nanghpam grai naw law nga ai majaw, tang du hkra pat hkum sa wa lu na matu, 1993 October 9 ya shani hta Ka-ni hte nanghpam pat jasan komiti hpaw nna n-gun dat bungli shang hpang sai. Komiti gaw, Ka-ni nanghpam hpe tsep kawp pat kau sai lam, matsun laika, ndau laika, garan laika (pamphlet) ni shabra ai, Komiti hpe mung Ginjaw, Ginwang Ginjaw, Ginwang, Ginwang Daw, Ninghtawn tsang hte tsang hpaw nna, mungshawa ni hte magam gun ni hpe hpaji jaw hkaw tsun ai, jep chyoi ahkyak la ai, rim nna bungli ja ari jaw sharin shaga ai lam ni galaw lai wa sai. Lu sha ai ni hpe Ginwang madang kaw du hkra dawn dabang hpaw nna dawn jasan ya ai hte hkai rem bungli ni woi galaw sai.

Dai zawn woi galaw ai hta n-ga, 1993 October 25 ya shani ahkyak la ai hte seng ai KIC Tara Aming hpe shapraw sai. Dai tara aming ni gaw lu sha ai ni, dut mari hpaga galaw ai ni, Ka-ni hkai ai ni, shalai shalet ai ni, nanghpam

galaw shapraw ai ni yawng a ntsa ahkyak la sharin shaga na tara aming re. Dai ningpawt ninghpang tara hpe ginra masa aten ahkying hta hkan nna 3 lang gram sharai jahkum shatsup ai hte jai lang nga ga ai. Dai zawn polisi jahkrat woi galaw ai majaw, KIO Uphkang ginra ni hta Ka-ni hkai ai, dut ai, lu sha ai masha ni grai yawm mat sai.

Rai yang 1994 February 24 ya shani KIO hte Myen Hpyen Dap asuya (၄၀၀၀) gap hkat jahkring ai h pang hpaga yumga mahkrun pru wa ai hte shara shagu na masha pru shang law ai, Myen asuya hte uphkang ai lam gayau gaya byin nna, tara shakang yak ai majaw Ka-ni nanghpam hpan hkum sumhpa mung kalang bai laja lana law wa sai. Mare buga masha ni hte KIO magam gun kata hta mung Ka-ni nanghpam lu sha ai ni grai bai law wa ai. Dai majaw KIA hpyen n-gun hpe jai lang nna, masing kaba hte Ka-ni yi dan shamyit ai, Ka-ni dawn ya ai lam galaw lai wa sai. Dai hta n-ga, Mungshawa akyu ara a matu htingbu mungdan Miwa asuya hte lata gindun nna pat jasan galaw ai lam, malai hkai nmai masing ni galaw lai wa sai.

Raitim, Ka-ni nanghpam manghkang ni grau grau law jat wa ai majaw, 2010 ning October 1 ya shani KIO Laksan Ginjaw Ka-ni nanghpam Pat Jasan Komiti ngu, kalang bai hpaw masat nna laja lana n-gun dat galaw lai wa sai. 2011 ning June 9 ya shani kaw nna Myen Hpyen Dap hte KIA majan kalang bai byin wa ai ten, KIO uphkang ginra ni hta gaw pat jasan bungli hpe tangdu hkra galaw lu ai raitim, Myen Hpyen Dap ni gasat zing la nna dap jung mat wa ai ginra ni hte mare kaba ni hta gaw Ka-ni nanghpam manghkang grau sawng, Ka-ni hkai shadang mung grau tsaw jat wa nna, Ka-ni hpraw (No. 4) hte Yama ni galaw shapraw ai shadang hte dut ginlen ai lam mung grau law jat wa ai.

Dai majaw Wunpawng mungshawa ni a kata hta mung Ka-ni nanghpam hte seng ai Wunpawng Ramma zuphpawng kaba hpe 2013 June 24 - 25 hta galaw nhtawm ningmu kahkyin ladat tam la nna, Ka-ni nanghpam hpe gasat shamyit saw a lu na matu Wunpawng amyua sha ting hte seng ai Pat Jasan Komiti kaba hpaw ra ai lam, Amyu sha yawng shang lawm ra ai lam, Makam masham hpe ningpawt tawn nna gasat ra ai ngu ai ningmu ni hpe jawm myit hkum sai.

Dai hpang 2014 February 24 ya shani Nawku hpung Ningbaw ni, Wunpawng amyua sha Ningbaw ningla ni shang lawm ai myit nchyan shaw zuphpawng kaba galaw nna 2014 April shata 17 ya shani Wunpawng Amyu Sha

Ka-ni Nanghpam Pat Jasan masing jahkrat ai hte, Jum Hpajang Komiti hpe hpaw ninghtan sai. Jum Hpajang Komiti kaw nna woi awn let Ningmu jahpaw ai lam, Dawn jasan ya ai lam, Dut mari shalai shalet hpaga galaw ai ni hpe rim ahkyak la ai lam, Ka-ni yi hkyen jahten ai bungli ni hpe myit su myit rawt hte galaw lai wa masai.

KIO Ginjaaw Ka-ni Nanghpam Pat Jasan Komiti gaw Wunpawng Amyu sha ni yawng Ka-ni nanghpam manghkang kaw na lawt lu hkra pangdung tawn let matut shakut gasat shamyit sa wa na ga ai.

# SAWK SAGAWN LAM HTA JAI LANG AI LADAT

---

## 1.1 HKAJA HKRANG MASA.

Sawk sagawn (Survey) hta ai lam byin tai wa lu na matu shawng ningnan Ningmu kahyin Hpaji jaw ai Zuphpawng "DRUG ADVOCACY CONSULTATION ZUPHPAWNG" hpe Jum Hpajang Komiti, Ginra Pat Jasan Komiti ni hte Hpaji jaw salang ni shanglawm let, 4-5 May 2018 lahkawng ya galaw la lu sai. Dai h pang, Data format designing and Questionnire Developing workshop hpe Ginra (8) kaw na shanglawm ai masha marai (15) hte 2018 June 13 - 15 Masum ya aten la galaw ai re.

## 1.2 GA SAN NI HPE GYIN SHALAT AI LAM

Sawk sagawn (Survey) ga san ni hpe gyin shalat ai lam hta Ka-ni hkai ai shara, hectare pru shadawn shadang ni hte shalet shalai ai lam ni, Ka-ni hpaw hte yama ni hpe galaw shapraw ai shara, shalet shalai ai lam, ginra manu ni, Ka-ni nanghpam dut ginlen ai shara hte lu sha jai lang ai amy baw sang, hti hkum ni, Ka-ni nanghpam hkai, galaw shapraw, dut ginlen, shalet shalai ai hte lu sha jai lang ai hpe n-gun jaw, madi shadaw, arang bang lawm ai lam ni, kadai ni makawp maga ya ai lam ni hpe sawk hkaja ai lam, Ka-ni nanghpam a majaw shinggyim wuhpung wuhpawng kaw kade ram ahtu hkra sum machyi shangun ai lam ni hpe sawk sagawn mahtai shapraw la lu na matu rai nga ai.

## 1.3 JAI LANG LADAT HTE LAKUNG LAKAP NI

Ndai sawk sagawn ladat hpe ningja hte hti hkum hpe mahta nna masat da ai. Buga ginra hte laksanakan masat da ai ladat hpe san htai hkam na masha hte shara de sa du hkaja la hkawm ai shaloi hta shinggyin la ra na ginlam ni hpe jai lang ai lam galaw ai.

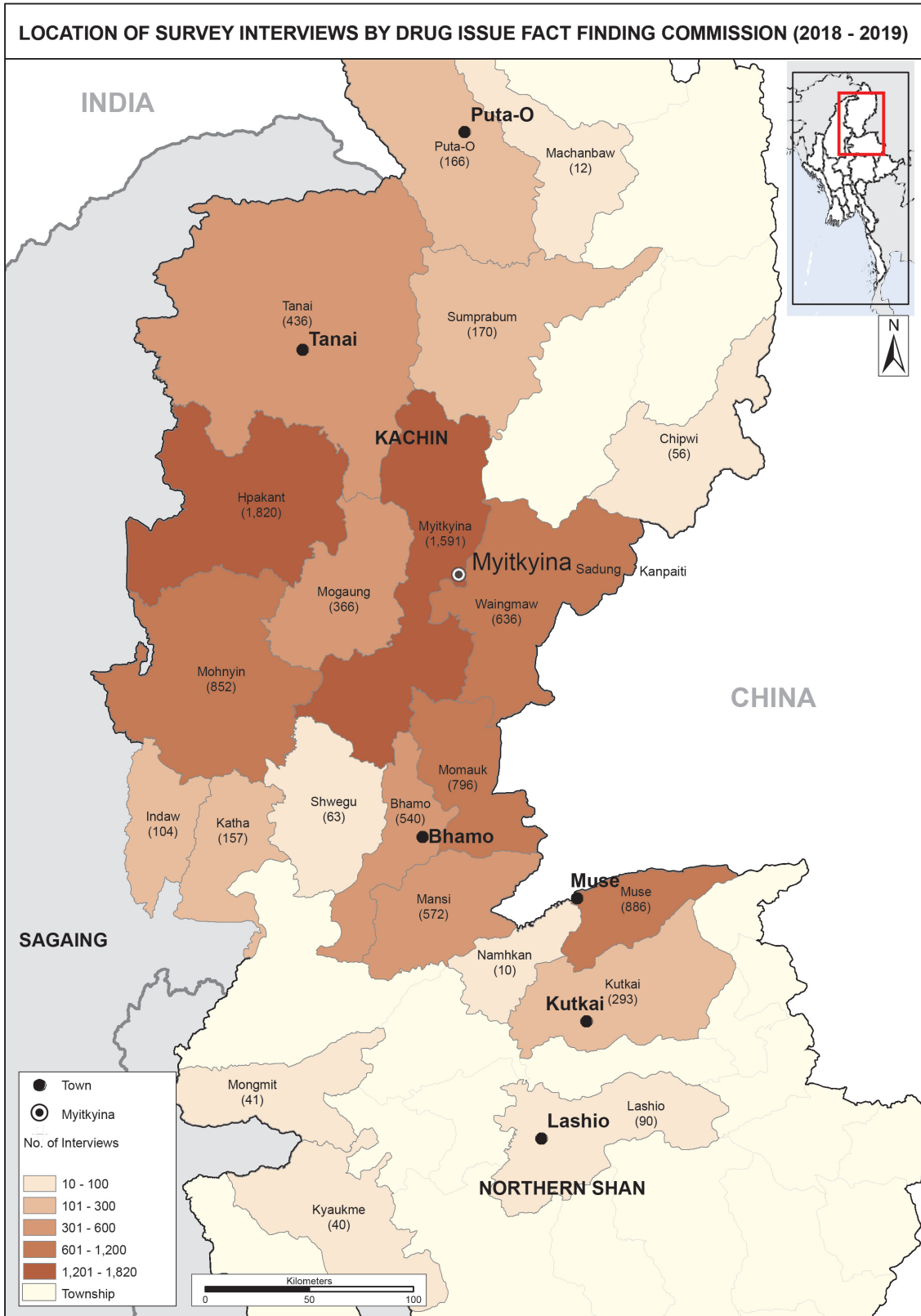
### Dai hkrang hte ginlam ni gaw –

- i. Ningmu jaw lu na masha dinghkrai ni hte hkum jahta ai ladat [Key Informant Interview (KII)]
- ii. Tatut shanglawm galaw nga ai ni a mabyin hkaja ai lam (Case study) Sawk sagawn la lu ai lawnglam ni hpe jahpan bang na matu ninghtoi (90) aten la ai. Jahpan bang ai hte jasan la ai hpe Microsoft Excel kaw jai lang ai. Lamu ga sumla hkrang shapraw lu na matu shara (location) Pinpoint madi la ai hpe Offline Lamu ga sumla (map)s App hpe jai lang let, Google Earch Pro software kaw shagrin la nna, Lamu ga sumla hkrang shapraw ai shaloi Arc GIS 10.5 software hte jai lang hkrang shapraw da ai re.



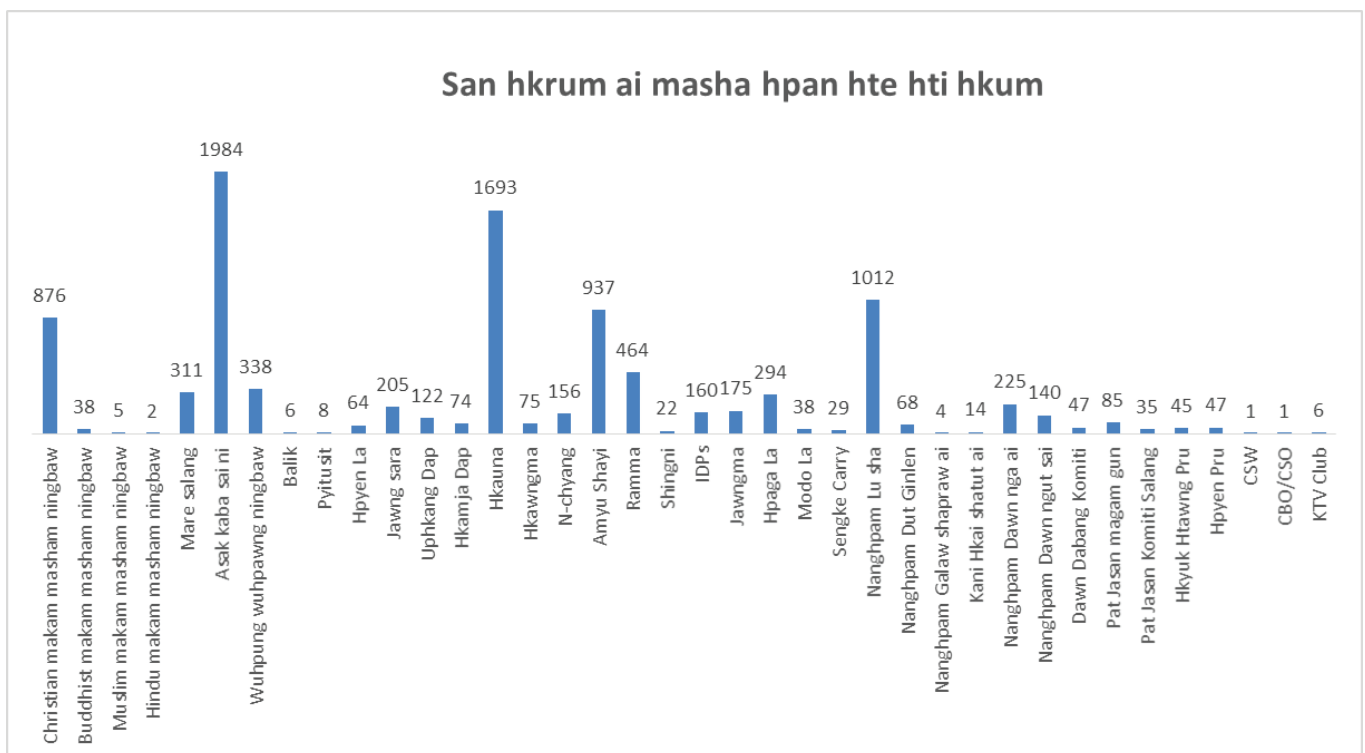
# SHIGA HTA SHINGYIN AI GINRA LAMU GA SUMLA

## (map of Survey areas)



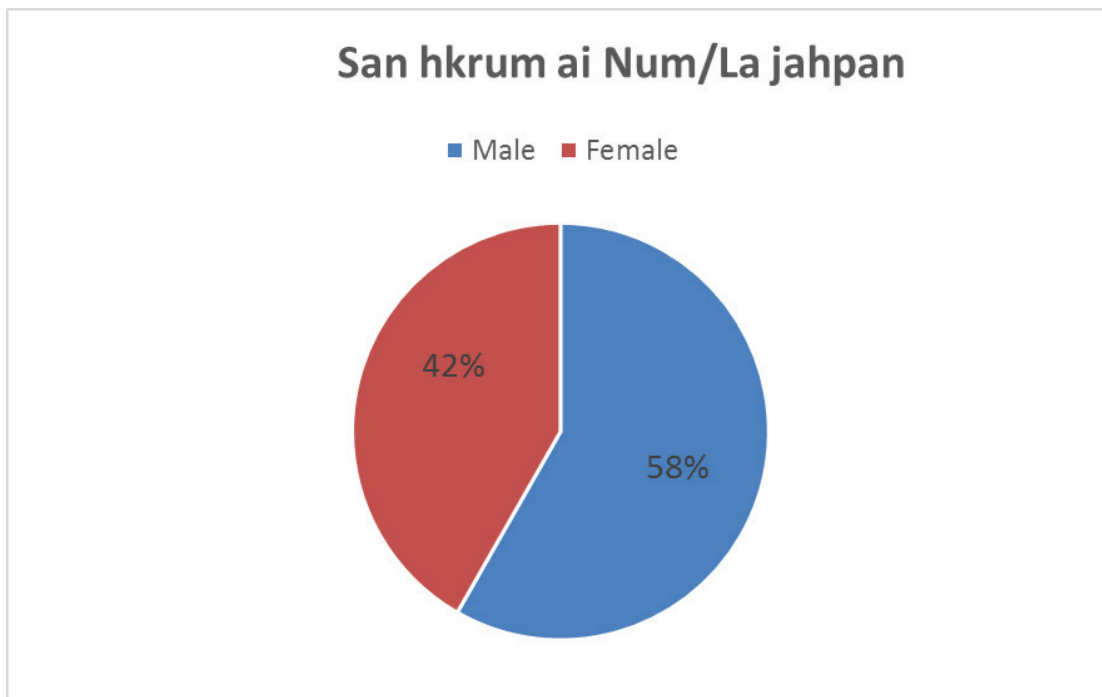
#### 1.4 SAN HKRUM NA MASHA HPE LATA AI LAM

Ngang kang ai shiga lawnglam lu la na matu, shiga jaw ya na masha hpe lata ai shaloi, n bung ai masha hpan, magam bungli hpan, asak pang hta hkan nna masat lata da ga ai. Masat lata da ai masha hpan ni gaw Makam masham Ningbaw, Sara, Mare salang, Asak kaba sai kanu kawa, Wuhpung Wuhpawng ningbaw (Amyu Shayi, Htunghking, CSOs), Laknak lang ai ni (Balik, Pyi-tu-sit, BGF, Hpyen La), Jawng Sara, Uphkang Dap hte Hkamja Dap magam gun ni, Yi Sun Hkauna, Hkawngma (Ja, Lungseng), N-chyang galaw sha ai ni, Amyu Shayi, Ramma, Shingni, IDPs, Jawngma, Hpaga La, Modo La, Sengke Carry galaw sha ai ni, Nanghpam (Lu sha, Dut Ginlen, Galaw shapraw, Hkai) ai ni, Ka-ni nanghpam dawn nga ai ni, dawn la



ngut sai ni, Dawn dabang Komiti, Pat Jasan magam gun hte Komiti salang, Hkyuk htawng pru, Hpyen pru, CSWs, KTV Club kaw bungli galaw ai ni hpe lata san ai.

San hkrum ai masha hpan hta law dik asak kaba sai kanu/kawa ni marai (1984) rai nna, Nambat lahkawng law dik san hkrum ai gaw Sun/ Hkauna galaw sha ai marai (1693) hte masum ngu na gaw Ka-ni nanghpam lu sha ai marai (1012) re. Tatut Ka-ni nanghpam dut ginlen nga ai marai (68) hte Ka-ni hkai ai masha marai (14) hpe mung san la lu ai. Nanghpam galaw shapraw ai ni ngu ai hta Ka-ni hpraw hte yama ni hpe ngu ai rai nga ai, galaw shapraw shara ni kaw n-chyang galaw nga ai marai (4) hpe mung lu san la ai re. Laknak lang ai wuhpung wuhpawng ngu ai hta Balik, Pyi-tu-sit hte Hpyen La ni yawng marai (78) hpe sa du san la lu sai re.



Sawk sagawn jahpan hta shinggyin mat wa ai shaloi, Ginra (19) kaw na num (4154) hte la (5799) yawng masha marai (9953) hte sa hkrum sawk sagawn san la lu sai re.

#### **1.5. JAH PANG CHYARANG NI HTE LAW NGLAM NI HPE HTA SHINGGYIN AI LAM**

Ginra shagu de pru hkawm sa nna, jahpan chyarang hta shinggyin la ai lam hpe 2018 July shata kaw nna 2019 March (shata 8) laman galaw la lu sai. Shiga lawnglam (data) ni hpe ginchyum ai dinglik ai hte sumtang ka ai ladaw hpe 2019 April kaw nna May shata du hkra galaw la lu sai. Tatut data hta shinggyin ai hta shim lam hte Ginra masa a majaw Ginra langai hte langai hta shinggyin ai aten n bung hkat nga ai. Ndai zawn jahpan chyarang ni hpe hta shinggyin hkawm ai shaloi Wunpawng mungdan hte lahta Sammung (Kachin Sub-state) ginra (19) de hta hkawm ga ai. Hpung garan nna hta shinggyin ai lam hpe Ginra hku masat let hta shinggyin mat sai re. Shiga hta shinggyin na masat da ai ginra ni gaw Sumprabum, Putao, Myitkyina, Waimaw, Hogawng, Hpakant, Mogaung, Hopin, Nawnglut, Mungnyang, Manmaw, Daw Hpum Yang, Sama, Man Win Gyi, Muse, Kuthkai (Kutkai), Lashu (Lashio), Chihpwi, Nga Dawng Ginra ni re. Shiga hta shinggyin ai magam bungli tangdu awng dang na matu Ginra shagu kaw shiga hta shinggyin lit hkam (Supervisor) langai hpra masat da ga ai.

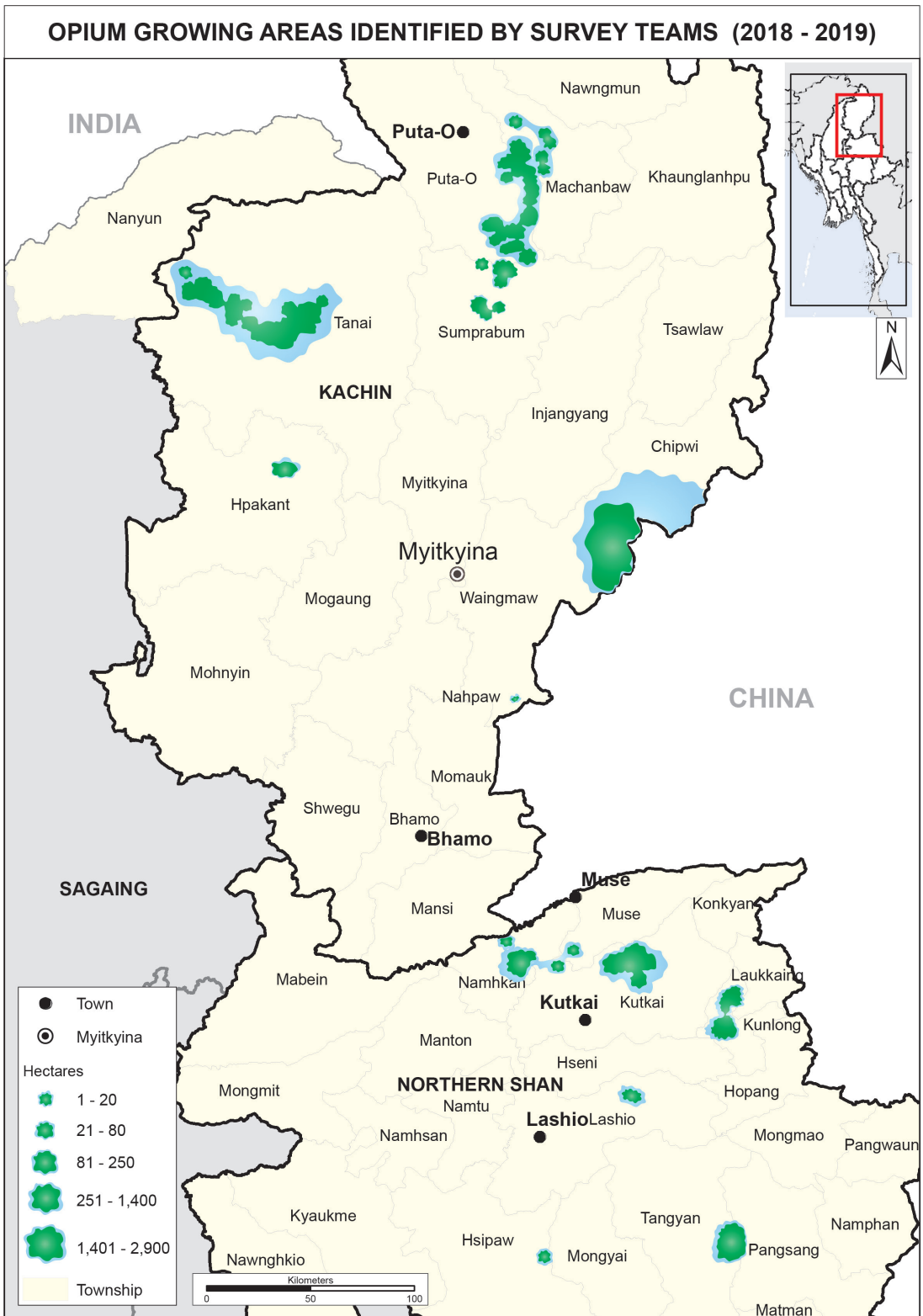
Ka-ni hkai ai, galaw shapraw ai, hte dut ginlen ai shiga ni hpe hta shinggyin la lu na matu, nkau ginra kaw gaw hpyen masa, shimlam ni a majaw tang-

Group	No. of data Collectors	Area
Group (1)	5	Putao
Group (2)	7	Sumprabum
Group (3)	22	Myitkyina
Group (4)	3	Waimaw
Group (5)	8	Chihpwi
Group (6)	22	Hpakant
Group (7)	20	Hugawng
Group (8)	16	Mogaung
Group (9)	15	Hopin
Group (10)	12	Nawng Lut
Group (11)	20	Mungnyang
Group (12)	23	Sama
Group (13)	5	Daw Hpum Yang
Group (14)	18	Manmaw
Group (15)	19	Man Win Gyi
Group (16)	12	Lashio
Group (17)	13	Kut Hkai
Group (18)	16	Muse
Group (19)	7	Nga Dawng

du hkra sa hta la na mayak nga ai. Grau nna, Pyi-tu-sit hte BGF ginra ni, Myen Hpyen Dap, post hte ni nawn ai ginra na Ka-ni hkai ai, galaw shapraw ai shiga lawnglam lu la na matu, laksan masha lata san let aten hpe jahtuk maram la nna hta shinggyin la ra nga ga ai.

Ka-ni hkai ai hte galaw shapraw ai shiga ni hpe report hta hkan nna shiga hkumtsup lu na matu, numdaw lahkawng lang aten la masat nna, masha hpe mung alak mi bai lata san la nhtawm hta shinggyin la ra ai re. Ka-ni hkai ai shiga hpe madung dat hta shinggyin la lu na matu ginra ni hpe masat ai hta, Wunpawng Mungdan kata na Danai, Sumprabum, Putao, Sadung, Kanpaiti hpe masat ai, Lahta Sannung (Kachin Sub-state) de gaw Muse, Kuthkai (Kutkai), Lashu (Lashio) ginra ni hpe masat let hta shinggyin da lu ga ai.

# KANI HKAI SHATUT AI SHARA NI





## SAWK TAM MU LU AI LAM NI

### 1. KA-NI HKAI - AI LAM

Myanmar Mungdan kata Ka-ni hkai ai ginra gaw lahta Sannung (Kachin Sub-state) hte Kachin state kata kaw rai nna, Myen Hpyen Dap, BGF hte Pyi-tu-sit uphkang ai ginra kaw hkai ai shadawn shadang law dik (tsaw dik) rai nga ai. 2018 - 2019 shaning na Ka-ni hkai ai data hpe yu yang, 2011 ning KIA hte Myen asuya Hpyen Dap majan kalang bai byin hpang ai, KIA a ginra ni law law tat sum kau ai shara ni rai nga ai Danai, Sumprabum hte Putao ginra kaw Ka-ni hkai ai lam grau grau law jat wa nga ai. Laiwa sai 2014 - 2016 shaning laman hta mung Ka-ni yi dan shamyit ai lamang hpe Mungshawa PJS hpung ni Danai ginra de sa du dan shamyit kau lu sai re. 2016 January 11 kaw nna February (1) laman dan shimyit kau lu ai Ka-ni yi maram hectare (655.47) re. Raitim, Danai ginra de Myen asuya Hpyen Dap hte KIA ni majan kahtap byin ai 2017 shaning kaw na Ka-ni yi dan shamyit ai masing hpe n lu galaw mat wa sai.

“2016 January (15) ya jawhpawt ten Tarung Mazup lawu Ja Gun Nawng hte Byan Tang Nawng lapran na Ka-ni yi hpe sa dan shamyit nga ai ten, yi madu kawn shi a dumhpau sinat hte anhte PJS ni hpe hkap gap ai. Dai shaloi Mogaung Ginra PJS kaw na Shadang Lahtaw Tu Tsai hpe gap hkrum nna asak apnawng mat sai re.”  
(San/htai: PJS apnawng masha, Danai)



2016 January (11) kaw na February (1) ya laman, DIFC hpung (7), Masha n-gun yawng (614) hte Danai ginra de Ka-ni Yi dan shamyit nga yang.

2018 – 2019 Ka-ni hkai ladaw, Danai ginra de Ka-ni hkai ai hpe sawk sagawn lu na matu sa ai shaloi shimlam a majaw, Laiwa sai 2016 ning Ka-ni yi dan shamyit kau sai hectare shadawn shadang hpe hpungda dep hkap hkra n lu hta shinggyin la lu sai.

Sumprabum ginra mayan de 2012 ning shata man (4) kaw nna KIA hte Myen asuya Hpyen Dap majan byin hpang wa sai. Myen Hpyen Dap ni, KIA uphkang ai shara ni hpe langai hpang langai htim gasat shara la wa ai hpang, shawng de Ka-ni n hkai yu ai shara ni hta Ka-ni hkai ai lam law jat wa ai hpe mu lu ai. KIO Pat Jasan masing hte maren, Ka-ni yi dan shamyit ai lamang hpe shaning shagu galaw nga ai raitim dai shara ni hta Myen Hpyen Dap ni shara la uphkang nga ai re majaw, KIA Pat Jasan ni Ka-ni yi sa dan shamyit ai lamang n lu galaw mat sai. Mungshawa PJS wuhpung ni hku nna mung Ka-ni yi dan shamyit ai lamang hpe laiwa sai 2015 - 2016 shaning na zawn adan aleng n lu dan shamyit kau wa sai re. Myen Hpyen Dap ni Ka-ni yi ni hpe sa dan shamyit kau ya ai lam n galaw ai hta n-ga, Ka-ni hkai ai ni kaw na gumhpraw hpyi la ai lam gaw shaning shagu galaw ai lam sagawn chye lu ai.

*“Ka-ni yi madu ni kaw na mare kaw dung ai Myen Hpyen Dap (Hk-L-Y 138) hpe Ka-ni yi madu marai langai mi Myen gumhpraw Mun masum hpra (30,000/-) jaw ra ai re. Ka-ni hpraw hte Ka-ni chyang dut ai rai yang shata mi Mun manga (50,000/-) dai mare kaw dung ai Myen Hpyen Dap ni hpe jaw ra ai.” (San/htai: Ka-ni hkai ai masha, Sumprabum)*

Sumprabum hte Putao ginra kaw Ka-ni hkai ai hpe buga mare masha ni madung hkai ai rai nna, arang shaw ya ai ni gaw dai ginra kaw gat dut hpaga galaw ai ni hte Ka-ni nanghpam dut sha ai ni re hpe mu lu ai.

Wunpawng Mungdan kaw Ka-ni hkai ai law dik gaw Kanpaiti ginra (township) hte Sadung (Sadon) ginra (township) rai nga ai BGF (1003) hte Pyitu-sit uphkang gaiwang ginra kaw re hpe mu lu ai. BGF (1002) uphkang gaiwang rai nga ai Tamu Hkung, Hkyamju, Jitloi hte Lungza mare mayan de mung Ka-ni hkai ai hpe hkaja sawk sagawn na matu shimlam mayak a majaw, n lu sa hta shinggyin la lu ai raitim, Ka-ni hkai ai kaw n-chyang sa galaw sha ai buga masha ni a shiga jaw ai kaw nna Ka-ni hkai ai maram hectare (1215) daram nga ai hpe chye lu ai. Ndai BGF (1002) ginra de laiwa sai 2016 ning January shata kaw Mungshawa PJS ni pawnghpawm nna Ka-ni yi hectare (324) jan hpe sa du dan shamyit kau lu sai re.



*“2016 January (23) kaw na February (8) ya shani, ninghtoi (17) ya tup Pawnghpawm Ginra PJS hpung masha n-gun (1,200) hte Chihpwi mawdaw lam hku nna, lung wa let Hkyamju mare lam hku shang mat ai. Hkyamju, Jikloi, Lungza hte Wuma bum mayan na Ka-ni yi hectare yawng (324) jan dan shamyit kau sai re.” (San/htai: PJS apnawng masha, Waimaw)*



*2016 January (23) kaw na February (8) ya laman, Pat Jasan hpung ni Lungza hte Wuma bum lapran na Ka-ni Yi dan shamyit nga yang.*

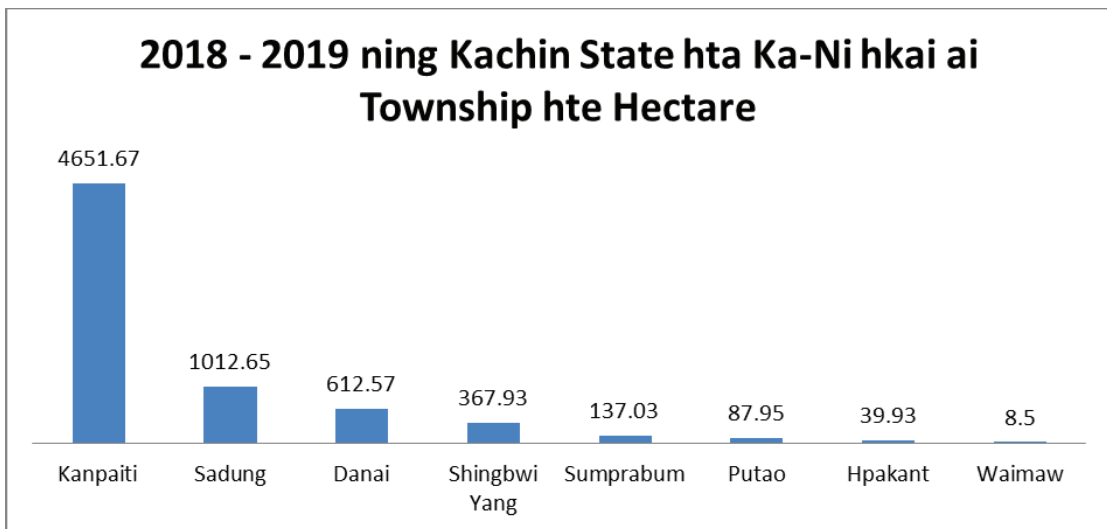
Ndai ginra ni hta Myen asuya uphkang sairu hte hkrak uphkang ai shara rai nna, BGF (1003), BGF (1002) hte Pyi-tu-sit, asuya Balik ni, Myen Hpyen Dap (Sadung Byu-har hte Pang Wa Byu-har) ni dap jung Uphkang shara la nga ai ginra kata kaw na mare makau, post ni hte BGF (1003) Barrack makau hkan Ka-ni hkai ai hpe adan aleng mu mada nga ai.

2018 – 2019 shaning laman Ka-ni hkai - ai hpe township hku yu yang, Kachin state, Ginwang daw township (8) kaw na hectare yawng (6918.23) rai nga ai. Ka-ni hkai ai hpe Ginwang daw hku rai yang; Kanpaiti (67%), Sadung (15%), Danai (9%), Shingbwi Yang (5%), Sumprabum (2%), Putao (1%), Hpakant (1%) re. Waimaw township kata hta gaw Nahpaw Myen Hpyen Dap (Hka-Ma-Ya 521) makau grup-yin na Ka-ni yi hectares 8.5 ram re, dai shara hpe laiwa sai 1987 May shata kaw n Myen Hpyen Dap shara la jahkrat nga sai rai nna, ya yang Miwa mung hte Waimaw township Aung



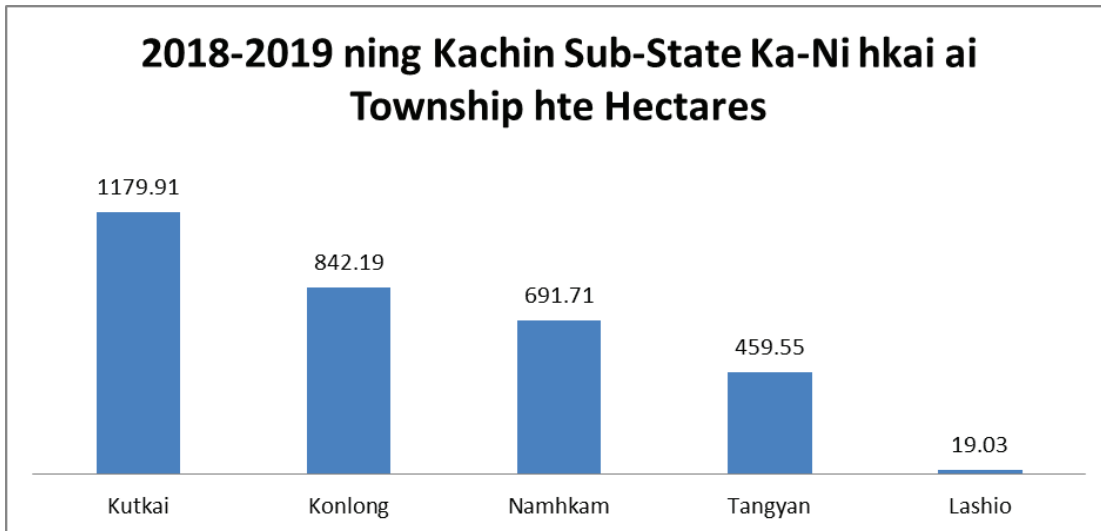


Pic - 1: BGF (1003) Hpyen Dap Barrack, Head Quarter hte ni kahtep ai Ka-ni Yi sumla ni. 25°25'8.56"N 98° 1'0.67"E



Myay Thit mare kaw na miwa amyua sha htinggaw 16 shanu nga ai re. Dai miwa ni gaw Myen Hpyen Dap ni hpe shamyet shanat let shaning shagu Ka-ni hkai nga ma ai.

Lahta Sattung (Kachin Sub-state), Ginwang daw (5) kaw Ka-ni hkai ai hectare yawng (3192.40) re hpe mu lu ai. Ginwang daw ni hta tsa lam shadang masat ai shaloi Kuthkai (Kutkai) (37%), Kunlung (Kunlong) (26%), Namhkam (22%), Tang Yan (14%), Lashu (Lashio) (1%) re hpe mu lu ai. Kachin Sub-state ginra hpe madung tawn data hta ai re majaw, Lashu (Lashio) hte Tang Yan ginra nkau hte lawu daw shara ni de data hta shinggyin ai lam hpe n galaw lu ga ai.



Wunpawng Mungdan kaw Ka-ni hkai ai hectare yawng (6918.23) hte lahta Sannung (Kachin Sub-state) de gaw hectare yawng (3192.40) rai nna, lahkawng pawng ai rai yang 2018 – 2019 ning laman Ka-ni hkai ai hectare yawng (10,102.14) re.

BGF (1003), BGF (1002) hte Pyi-tu-sit uphkang ai ginra na Ka-ni yi ni hpe dan shamyit na matu Mungshawa PJS hpung ni laiwa sai 2016 February (2) ya shani, Ka-ni yi hectare (6.08) ram hkyen ngut nna bai nhtang wa ai shaloi, Ka-ni yi madu rai nga ai Mawsitung Mare masha ni PJS hpung ni hpe manghkang tam ai lam byin lai wa sai re.

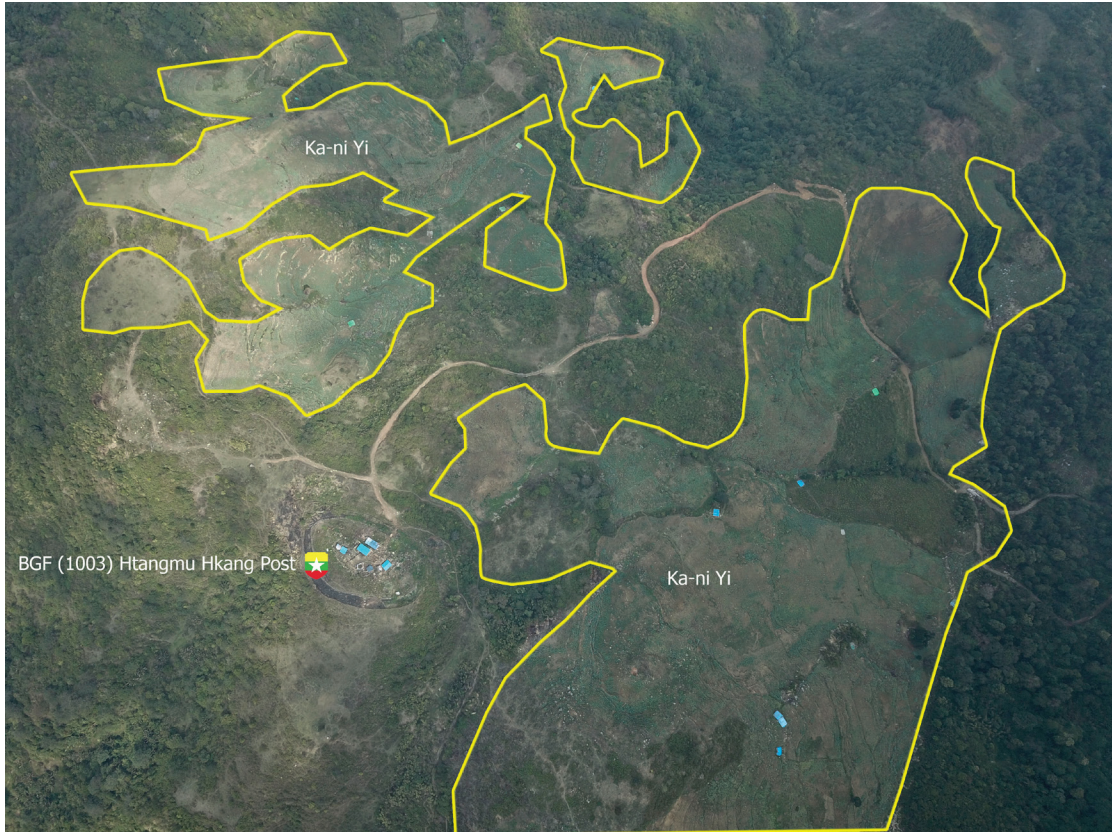
*“2016 February (3) Jahpawt Ka-ni yi dan shamyit ngut nna, bai nhtang wa ai shaloi, Ka-ni yi madu ni rai nga ai Mawsitung Mare masha ni gaw, anhte PJS ni hpe nlung, hpun tawng, lahpaw ni hte kabai gap bun nna, htaw wa htaw sa hta jailang ai PJS ni a modo pat ni hte di mala hka wan ni hpe adup jahten kau ya ai.” (San/htai: PJS magam gun, Waimaw)*

Lahta Sannung (Kachin Sub-state) hta Ka-ni hkai ai hpe hpaga kaba hku mare makau hte bum marawn kaw n hkrit n tsang dan dan leng leng hkai nga ai re. Namhkam, Panse Pyi-tu-sit uphkang ai ginra, Kuthkai (Kutkai) kaw Lung Htang Pyi-tu-sit, Shau Haw Pyi-tu-sit, Tamunye Pyi-tu-sit, Mungji Pyi-tu-sit, Kuthkai (Kutkai) Pyi-tu-sit hte Kawng Hka Pyi-tu-sit a uphkang ginra kata, Kunlung (Kunlong) hta Kunlong Laksan Balik, Nam Jawng Pyi-tu-sit uphkang ai ginra, Lashu (Lashio) ginra hta Kawng Hka Pyi-tu-sit hte Tang Yan Pyi-tu-sit uphkang ai ginra hta Ka-ni hkai ai hpe mu lu ai.

*“Ka-ni hkai ai hpe (10) ning jan galaw wa ai, 2017-2018 ning hta gaw Bang Mawn kaw hectare (1.62) galaw nna, Miwa Lauban ni*



*hpe dut ya ai. Ka-ni yi kaw n-chyang shang galaw ai ni hpe gaw Moekok kaw na saw shaga la nna, shata mi Myen gumhpraw sen mi (100,000/-) jaw ai. Hkai lu na matu ahkaw ahkang gaw Kawng Hka Pyi-tu-sit kaw na jaw ya ai.” (San/htai: Ka-ni hkai ai masha, Lashio)*



*2019 March (11) ya shani gayet da ai BGF (1003) a Htangmu Hkang Post hte Ka-ni Yi sumla ni. 25°22'49.91"N 98° 0'29.99"E*



*BGF (1003) Dap a Barrack, Nbungli pa hte ni kahtep ai Ka-ni Yi sumla ni. 25°25'8.56"N 98° 1'0.67"E*

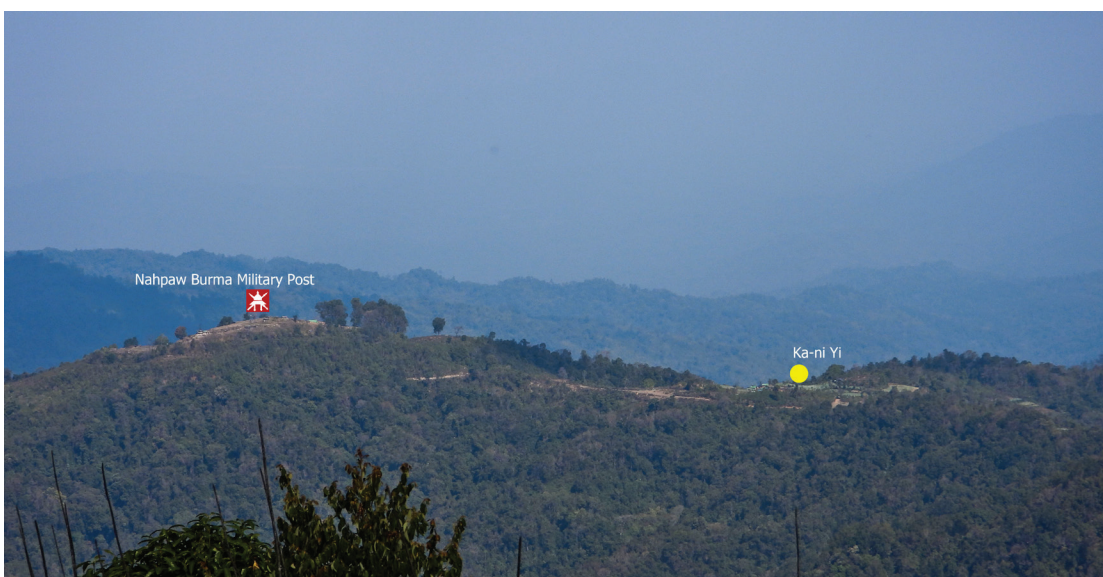


Pyi-tu-sit hte BGF ni gaw, tinang wuhpung wuhpawng ngang grin lam hte tinggyen nga mu nga mai lam hpe ningshawng tawn let, Hpaga kaba hku Ka-ni hkai ai magam bungli hta shanglawm nga ai hpe mu mada ai. Maga mi de madun da ai Lamu ga sumla (map) hpe yu yang Ka-ni yi sun hpe Myen asuya Hpyen Dap, Balik, BGF hte Pyi-tu-sit ni kaw nna makawp maga n-gun jaw, madi shadaw lawm ai lam dan leng nga ai.

Danai, Putao, Hpakant hte Sumprabum ginra kaw Ka-ni hkai ai ni gaw buga masha ni hte shinggan de na Myitkyina, Mogaung, Waimaw hte lawu myen



*2019 March (9) ya shani gayet da ai BGF (1003) uphkang ginra na Ka-ni Yi sumla ni. 25°24'56.38"N 98° 0'31.97"E*



*2019 February (28) ya shani gayet da ai Nahpaw Myen Hpyen Dap Post uphkang ginra na Ka-ni Yi sumla ni. 24°50'25.83"N 97°38'46.75"E*



mung de na arang kaba lu ai ni re hpe mu mada lu ai. Waimaw –Nahpaw Myen Hpyen Dap grup-yin kaw Ka-ni hkai ai ni gaw Waimaw Township Aung Myay Thit mare na hte Miwa mung na miwa ni rai nga ma ai.

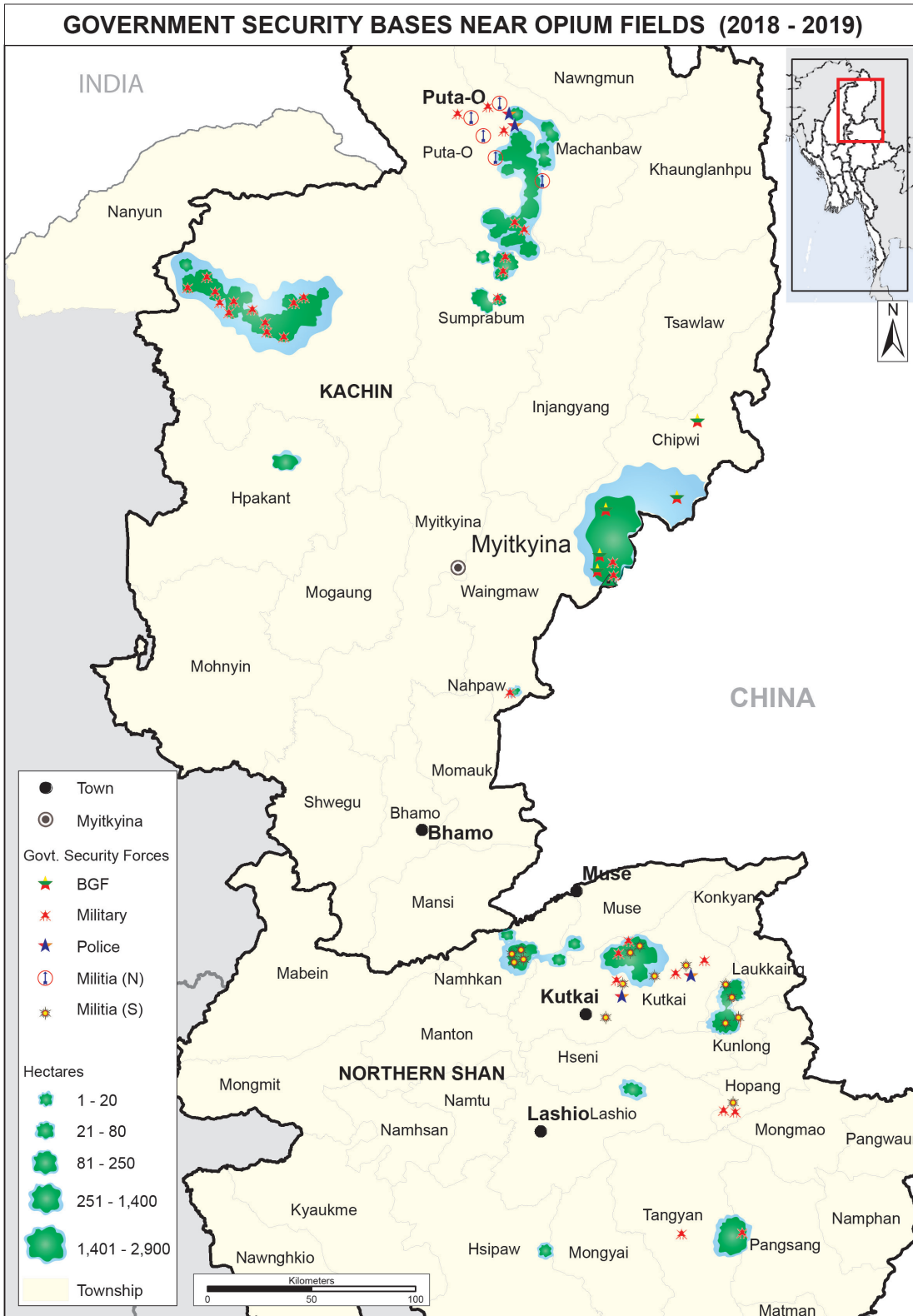


2019 February (28) ya shani gayet da ai Nahpaw Myen Hpyen Dap Post uphkang ginra na Ka-ni Yi sumla ni.  $24^{\circ}50'25.83''N$   $97^{\circ}38'46.75''E$



2019 March (10) ya shani gayet da ai BGF (1003) uphkang ginra na Ka-ni Yi sumla ni.  $25^{\circ}24'50.24''N$   $98^{\circ}1'21.16''E$

MYEN HPYEN DAP, PYI-TU-SIT, BGF NGA AI GINRA HTE  
KA-NI HKAI AI SHARA



*“Sadung ginra kaw na re, Maning gaw n lu galaw ai, daining 2018 – 2019 shaning gaw Maga mare kaw hectare (0.61) Ka-ni hkai ai. Ka-ni hkai lu na matu ahkun hku nna, BGF, Ginra Pyi-tu-sit, Ah-Htu-Hmu-Yit (Balik) ni hpe gumhpraw jaw ra ai. BGF ni gaw daining 2018-2019 shaning hta Ka-ni yi hectare (2.03) hta jan nna n mai galaw ai nga tsun ai. Hectare (2.03) hta jan nna galaw ai ni hpe dam shawa na hte Mawdaw lam hte grai ni kahtep ai hku galaw ai ni hpe mung dam shawa na nga tsun ai. Miwa mung kaw na sa galaw ai ni hpe gaw htam 1, 2 jat nna shawa ai lam galaw ai.”*  
(San/htai: Ka-ni hkai ai masha, Sadung)

Sadung (Sadon) hte Kanpaiti ginra na Ka-ni hkai ai shara ni gaw, Dumbang hka hku mayan na Lisu Maga, Lachid Maga, Miwa Maga, Gyitgwi Dum, Gu Hkan, Htanmaw Hkang mare makau grup-yin, Shing Jai, Wutmaw, Gunaw Bum, Ba Dawn mare makau grup-yin, Wawhkyung, Masa, Kungmai, Salukhkawng (Mawshitung), Nawgu, Masa Yindam, Langan Mare makau grup-yin, Luhtawng, Bumling, Aju Yindam, Hkindu, Tachyahaw, Danzaw mare lapran makau grup-yin, BGF (1002) uphkang gaiwang rai nga ai Hkyamju, Jitloi (Zahkung), Hkyawngmaw, Lungza mare makau Wuma Bum grup-yin hte Waimaw – Chihpwi Ginwang jarit mayan rai nga ai Tamu Hkung makau grup-yin ni kaw re.





*2019 March shata gayet ai Konlong Balik (laksan) ginra na Ka-ni Yi sumla.*



*2019 Marchs shata gayet da ai Shau Haw Pyitusit ginra kata na Ka-ni Yi sumla.*





*2019 March (12) ya shani gayet da ai Panse Pyitusit ginra Tar Kun mare makau na Ka-ni Yi*



*2019 February (17) ya shani gayet da ai Panse Pyitusit ginra Tar Kun mare makau na Ka-ni Yi*

KA-NI HPRAW SHALET SHALAI AI HKRUNLAM



## 2. KA-NI HPRAW GALAW SHAPRAW LAM

Ka-ni hpraw galaw shapraw ai jak rung hte shara hpe sawk sagawn ai shaloi shimlam mayak ni a majaw tup hkrak sawk sagawn la na yak ai. Raitim, lahta Sammung (Kachin Sub-state), Pyi-tu-sit uphkan ginra mayan de Ka-ni hpraw galaw shapraw ai jak rung nga ai hpe Ka-ni hpraw a ginra manu, htaw shalet shalai ai hkrunlam ni a lamu ga sumla hpe yu nna law malawng mai byin ai gaiwang re ngu lu sawn la mai nga ai.

*“Asak (24) re, Jinghpaw re, Ka-ni hpraw galaw ai kaw 2017 March shata htum kaw na galaw sai, Ka-ni hpraw Mu Ningwa Hkaraw, Loi Hkang Gaiwang kaw galaw ai, shimlam gaw shanhte lit la ai. Ka-ni Jak rung madu gaw Miwa, Kukang masha re. Ngai hpe shata mi Myen Gumhpraw Sen lahkawng (200,000/) jaw ai, Bungli galaw ai masha yawng marai (50) jan ram nga ai. Lani mi Ka-ni hpraw Killo (150) jan galaw shapraw ai. Sara gaw Miwa mung de na re. Ka-ni hpraw hpe Mawdaw, masha gun shalai ai hku mung galaw ai. Ka-ni hpraw hpe Wa mung hkran, Kukang ginra de htaw shalai ai.” (San/htai: Ka-ni hpraw jak rung kaw bungli galaw ai masha, Kutkai)*

Jinghpaw Mung kata Danai ginra, Hopin, Mohnyin, Mogaung ginra kata Ka-ni hpraw manu ni gaw kaga ginra na manu ni hta grau hkyamsa ai hpe mu mada lu ai. Bai nna, lahta Sammung (Kachin Sub-stae) Lashu (Lashio), Kuthkai (Kutkai), Namhkam ginra de na Ka-ni hpraw manu ni gaw, Jinghpaw Mung kata na manu hta grau yawm nga ai. Ka-ni hpraw manu hpe yu yang, Ka-ni hpraw gaw Sammung de na Pyi-tu-sit uphkan ai ginra kaw na law malawng pru ai lam hpe dan leng nga ai. Shalet shalai ai san/ htai kaw mung lahta Sammung (Kachin Sub-state) kaw nna Jinghpaw mung de du shang wa ai lam hpe law malawng tsun dan ma ai re.

*“Asak 36 ning rai sai, Daknai mare na re, Lu sha ai gaw (7) ning rai sa. Lani mi Pannicilin palin mi lu sha ai, kalang mi lu sha ai manu Myen Gumhpraw (4000/) re. Daw O Pan dut ya ai, Ka-ni Nanghpam dai ni gaw Shau Haw, Lung Htang kaw na shang wa ai re, dai ginra kaw na Miwa Lauban ni Ka-ni galaw shapraw ai re. Ngai gaw PJS ni rim ai kalang hkrum ga nna, Daknai Buga kaw na Dawn dabang kaw shata mi dawn hkam la ga sai.” (San/htai: Nanghpam lu sha ai masha, Kutkai)*

Ka-ni hpraw hpe madung shabra ai shara gaw, Jinghpaw Mung na Hopin, Hpakant, Myitkyina, Danai ginra de grau law hkra du wa ai. Wunpawng Mungdan, Hopin ginra kaw Ka-ni hpraw manu gaw kaga ginra kaw dut



shabra nga ai manu hta grai shai, grai yawm nga ai. Shalet shalai hkrunlam madun sumla kaw yu yang mung, masha law malawng a mahtai hta Ka-ni hpraw gaw lahta Sammung de na du wa ai rai nna, Hopin ginra de kalang ta du shang wa ai hkrunlam gaw Kata, Bamaw, Mandalay kaw na re hpe mu lu ai.

*“Ka-ni lu sha ai gaw 3 ning rai sai, Ka-ni nanghpam hpan hkum hkra lu sha ai. Yama rai yang lani mi tawng 3 daram lusha ai. Ka-ni hpraw hte Ka-ni chyang mung lu yang lu ai hku lu sha ai. Kalang lu sha yang myen gumhpraw hkying (5000) na lu sha ai. Sa mari la ai shara ni gaw Namhkyi Maw, Lawu Maw hte Namma hkan na sa mari lu sha ai. Namhkyi Maw kaw na gaw U Win Po, Kahtet Maw kaw na gaw Daw Su, Tawng Sin Kalay kaw na gaw Kala-Ma kaw na mari lu sha ai. Ka-ni nanghpam ndai ni gaw Sammung maga de na shang wa ai re. Ka-ni nanghpam shalai shalet ai gaw Pyi-tu-sit ni hte Myen Hpyen Dap ni pawng nna shalai shalet ai re.” (San/htai: Nanghpam lu sha ai masha, Mohnyin)*

Hopin kaw nna, Mohnyin, Hpakant, Mogaung, Namawn, Myitkyina ginra ni de du wa ai hpe mu lu ai. Bamaw kaw nna gaw, Shwegu, Kata, Hopin, Myitkyina de rai nna, Bamaw de du wa ai Ka-ni hpraw yawng gaw Sammung de na re ai hpe mu mada lu ai. Jinghpaw Mung hta gaw BGF (1001), BGF (1002), BGF (1003) hte Pyi-tu-sit ni uphkang ai ginra rai nga ai, Pang Wa, Kanpaiti, Sadung ginra ni kaw na mung Chihpwi, Waimaw hte Myitkyina mare de Ka-ni hpraw shalai ai hkrun lam re hpe mu mada lu ai.

Lahta Sammung kata na Ka-ni hpraw shalet shalai ai hkrunlam hpe yu yang, Ka-ni madung hkai ai shara ni rai nga Kunlung (Kunlong), Tamungne (Tarmunye), Kawng Hka, Panse ginra kaw na Ka-ni hpraw ni hpe Kuthkai (Kutkai), Muse, Namhkam, Mandalay hku nna, Jinghpaw Mung hte Miwa mung de mung dut shapraw ai hpe mu mada lu nga ai. Ndai shalet shalai ai hkrunlam hpe yu ai shaloi, Ka-ni hpraw madung galaw shapraw ai shara gaw lahta Sammung maga de na Pyi-tu-sit uphkang ai shara kaw na re hpe mu lu nga ai.

*“Asak (27) ning re, Man Mak mare kaw nga ai, Ka-ni hpraw jak rung madu gaw Miwa la re asak gaw (45) ram rai sai. 2016-2017 ning shata (5) ram Jak rung kaw bungli galaw ga ai, shata mi Sen (2) lu ai. Bungli galaw ai masha yawng marai (30) re, dai kaw na sara hku nna galaw ai ni yawng marai (10) gaw Miwa la ni re, Jak rung nga ai gaw Kawng Hka Pyi-tu-sit ni a ginra kaw re, Ka-ni hpraw hpe Modo hte shana ten htaw shalai ai re, gara de htaw shalai ai gaw n chye ai.” (San/htai: Ka-ni hpraw jak rung kaw bungli galaw wa ai masha, Lashio)*

### 3. YAMA GALAW SHAPRAW AI LAM

YAMA (Methamphetamine) galaw shapraw ai lam hte seng nna sawk sagawn ai shaloi, galaw shapraw ai shara hpe tup hkrak chye lu na matu ginra masa hte shimlam mayak ni a majaw n lu sagawn la ai. Ndai YAMA galaw shapraw ai shaloi aloi ali htawt sit galaw shapraw mai ai re majaw, shara hpe tup hkrak chye lu na mung n loi la nga ai. Ginra a manu hte shalet shalai ai hkrunlam hpe sha maram la nna, mai byin dik hpe sawn shapraw la ra nga ai. Bai nna, Yama galaw shapraw ai jak rung kaw bungli shang galaw ai ni hte san/htai kaw nna maram chye la lu ai lam re.

*“Asak (20), dinghku n de shi ai, Kanbau bungli n nga ai, Loihkam kaw nga ai, 2016 ning hta YAMA galaw ai jak rung kaw nga ga ai, galaw ai shara gaw Bang Law maga na nam maling kaw re, Ngai gaw shimlam hku nna sa nga ai, Kawng Hka Pyi-tu-sit Hpyen La re. Jak rung madu gaw Miwa masha re, Miwa mung de na re. Shata mi Sen 2 lu ai, bungli galaw ai masha yawng marai (20) re, lani mi YAMA hkyep mun hku lu shapraw ai, Kawng Hka Pyi-tu-sit hpe ahkun bang nna galaw sha ai. YAMA hkyep ni hpe modo hte shalai la ai re, gara de shalai ai gaw n chye ai.” (San/htai: Loihkam Pyi-tu-sit, Kutkai)*

Lahta Sammung (Kachin Sub-state) kata YAMA shalet shalai ai hkrunlam hpe yu yang, Kuthkai (Kutkai) – Muse - Namhkam, Mandalay hku nna, Jinghpaw Mung hte Miwa mung de dut ginlen ai hpe mu mada lu nga ai. YAMA madung galaw shapraw ai shara hpe maram yu yang Kunlung (Kunlong), Tamungne (Tarmunye), Kawng Hka, Panse, Lung Htang, Shau Haw ginra kaw ni hta, Pyi-tu-sit uphkang ai shara kaw na re hpe maram lu ai.

*“Asak (50), dinghku masha yawng marai (6) nga ai, Kanbau bungli gaw YAMA hte Ka-ni hpraw hpaga galaw ai, Amyu gaw Miwa re, Shau Haw mare kaw na re, YAMA galaw ai jak rung kaw 2010 kaw na nga ga sai, (5) ning galaw sai. Jak rung madu gaw Miwa La re, Miwa mung de na re. Ngai hpe shata mi gaw sen 2 jaw ai, bungli galaw ai masha yawng (50) nga ai, Sara gaw marai langai re, Miwa la re. Lani mi Yama Htuk (100) jan lu shapraw ai. Modo, Gumra, Masha hte htaw shalai ai. Shalet Shalai ai hkrunlam gaw, Muse, Man Win lam hku nna htaw shalai ai.” (San/htai: Shau Haw mare na Nanghpam hpaga galaw ai masha, Kutkai)*

YAMA Jak Rung kaw bungli galaw ai masha ni tsun ai a mahtai law malawng gaw, Pyi-tu-sit uphkang ai ginra nkau hta YAMA shapraw ai Jak Rung nga ai lam tsun wa ai. Jak Rung madu hte sara law malawng chyawm gaw Miwa amyuu ni rai nna, Miwa mung de na re ai hpe mu mada lu ai. Ndai hpe yu

# YAMA SHALET SHALAI AI HKRUNLAM



yang Pyi-tu-sit ni hte Ka-ni nanghpam galaw shapraw ai lam hkri dun nga ai hpe mu mada maram lu nga ai. Shalet shalai ai hkrunlam hpe yu yang, Ka-ni hpraw shalet shalai ai hkrunlam hte bung ai hpe mu mada lu nga ai.

#### 4. NANGHPAM HPAGA GALAW AI LAM

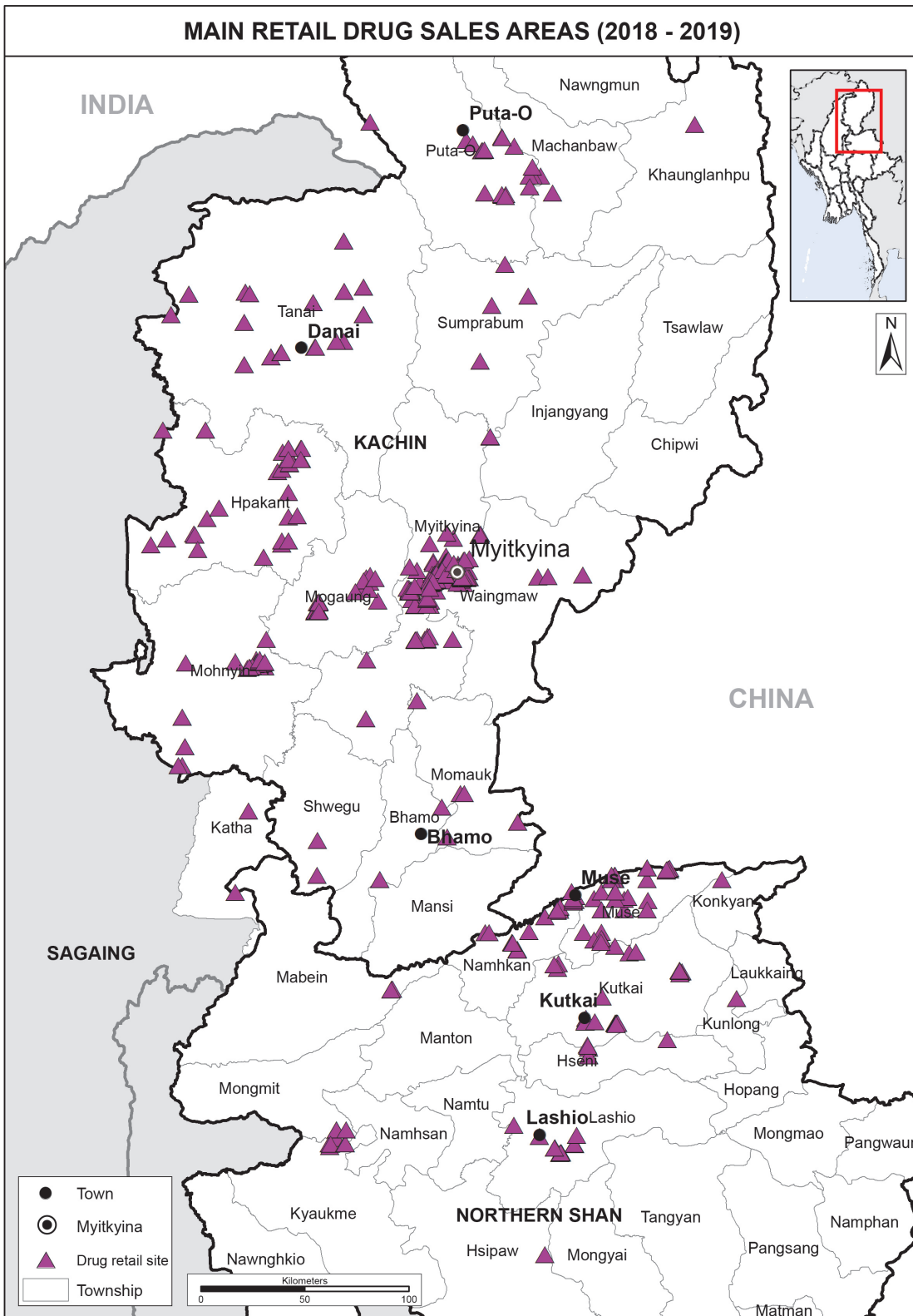
Ka-ni nanghpam dut ginlen ai a ntsa survey galaw yu ai shaloi, dut ginlen ai ni yawng gaw, Myen Hpyen Dap, asuya Balik, BGF, Pyi-tu-sit ni hte mare salang ni a shingnip ka-up, ahkaw ahkang hte dut ginlen ai lam hpe mu lu ai. Nanghpam dut sha ai masha hpan langai hte langai n bung nga ai, Arang kaba hte dut ginlen ai lam, shalet shalai ya ai ladat hte dut ginlen ai lam, shara hpe masat nna dut ya ai lam ni re hpe mu lu nga ai. Arang kaba hte dut ginlen ai ni gaw Myen asuya Uphkang salang, Myen Hpyen Dap, Balik, BGF, Pyi-tu-sit ni hpe mayun gumhpraw law law jaw nna, dut sha ai hpe mu mada nga ai. Dai hta grau nna Ka-ni nanghpam dut ginlen ai ni mung tsang hte tsang Hpyen Du, Agyi uphkang salang ni hpe mayun gumhpraw jaw nna dut ginlen nga ai re.

*“Asak (38) re, dinghku hte rai sai, yawng marai (4) re. Myen amyuu baw sang re, Ya gaw Nba-La-Hka kaw nga ai, Mandalay, Mait-Hti-Lar kaw na re. 2012 ning kaw na dut ma dut, lu mung lu sha ai, Nba-La-Hka lahta nam kaw ngai nan dut ai. Ka-ni hpraw hpe Nam Maw kaw na Sengke hte sa mari la ai. Dai Nam Maw na EVER Shingbut shara na ginsum ni yawng gaw nanghpam dut sha ai ni hkrai re. Ningbaw ngu ai baw (Gawng Paung) nga nna gaw nga ai le. Dai ni na mying gaw n chye lu ai. Shanhte gaw Balik ni hte ahkang aya lu ai ni hte matut mahkai nga ai, hpa majaw nga yang kalang lang gaw “Masa n htuk ai yawng zing” nga nna mung sa tsun ai, dai shaloi dut sha ai ni yawng zing kau ai. Nanghpam hte seng ai Pipe ni du hkra zing kau, kabai kau di nna seng ni pat kau, nta ni pat kau re ai re.” (San/htai: Nanghpam lu sha ai masha, Hpakant)*

Ndai case study hpe yu yang Ka-ni nanghpam dut sha ai ni law malawng gaw, Balik ni hte matut mahkai nna, masa n htuk wa jang Balik ni nan shiga jaw ai lam nga ai. Naypyitaw kaw na lung wa ai, Nanghpam Pat Jasan Balik ni lung wa ai shaloi nanghpam dut ginlen ai ni hpe shiga shawng jaw kau ai re majaw, nanghpam hte seng nna, mu rim la ai lam nau n nga ai hpe mu lu ai.

Ka-ni nanghpam dut ginlen ai hta nkau gaw matut mahkai ya ai, nkau gaw hkatum hku nna dut chyang ai, nkau gaw lapran shalet shalai ai hku nna gambum hpe sha ai. Nkau gaw tinang nan mung mari lu nna dut mung dut sha ai. Tinang manu htuk ai shimlam nga ai shara kaw dut ai hpe mu lu ai. Ka-ni dut sha ai ni law malawng gaw, ahkang aya lu ai ni, Balik, Hpyen Dap, asuya Uphkang salang ni hpe shanhte hpyi ai made gumhpraw jaw nna Ka-ni nanghpam dut ginlen nga ai hpe chye chya lu re.

# KA-NI NANGHPAM DUT GINLEN AI SHARA NI





*“Asak (33) rai sai, dinghku n de shi ai, Lung Seng tam na ngu na lung wa ai re. Ya mung Lung Seng tam nga ai. Myen amyua sha re, Maw Wan Kaba kaw nga ai, Sam Mung Dingda, Kalaw kaw na re. 2011 ning kaw na nanghpam dut sha hpang sai, ngai nan dut ai re, Hpakant kaw na Maw Wan Kaji sa lam, hka lam kaw dut ai, bai nna Maw Wan Kaba kaw mung dut ai. Nanghpam hpaga kaba galaw ai “Ma Mi Awng” kaw na la dut ai. Ngai gaw Ka-ni hpaw bang da ai Panecillin langai mi hpe 30,000 hte la ai, 35,000 hte bai dut ai. “Ma Mi Awng” kaw gaw ayan sa ai chye ai ni hpe sha jaw ai, shi kaw sa la nna ngai gaw manu ai shara hkan e dut ai. Ngai zawn sha kaga Lawng Hkang, Hpakant, Seng Tawng kaw na ni mung sa la ma ai. Ngai hte hkau ai ni Lung Seng tam ai ni hpe dut ya ai. “Ma Mi Awng” gaw wanglu wanglang dut sha lu na matu Balik, Ah-Htu-Mu-Yit hte Hpyen Dap ni kaw gumhpaw jaw da ai. Shi dut ai shara gaw Balik Dap hte grai ni ai, mu pyi mu lu taw ai re. Hpyen Dap mung ni ai, ntsa kaw re.” (San/htai: Nanghpam lu sha ai masha, Hpakant)*

Lawu na Ka-ni nanghpam dut sha ai shara lamu ga sumla (map) hpe yu ai shaloi, Wunpawng Mungdan de na Myitkyina, Waimaw, Washawng, Hpakant, Hopin, Mogaung, Mungnyang, Bamaw, Danai, sumprabum, Putao ginra ni hta law dik rai nna, ngam ai mare law malawng kaw mung Ka-ni nanghpam dut ginlen ai hpe chye lu ai. Wanglu Wanglang dut sha lu ai ginra ni gaw, Myen asuya uphkan ai hpaga chyai ai ginra ni rai nga ai Ja maw, Mailung dabang, Lung Seng maw ginra kaw madung dut sha ai hpe mu lu nga ai. Nkau muklum kaba hkan mung wanglu wanglang dut sha ai lam nga ai.

Kachin Sub-state de gaw Muse, Namhkam, Kuthkai (Kutkai) ginra hte Pyi-tu-sit uphkan ai ginra ni kaw Ka-ni nanghpam hpe aloi ali lu la mai nga ai. Dai ginra kaw gaw Ka-ni nanghpam hpe Pyi-tu-sit wuhpung wuhpawng a shingkan shingwan hte Ka-ni nanghpam dut ginlen nga ai rai nna, dai ginra de madung galaw shapraw dut ginlen nga ai ni gaw nanghpam hpaga galaw ai miwa lauban ni rai nhtawm, law malawng Miwa mungdan kaw na masha ni rai nga ai. Shanhte gaw, Ka-ni nanghpam hpe hpaga kaba hku nna dut ginlen ai rai nna, rim hkrum ai lam, hkyuk htawng rawng hkrum ai lam n law ai daram re hpe mu lu nga ai.

Ka-ni nanghpam a tsin-yam grau hkrum sha ai ni gaw, ja gumhpaw yak hkak matsan ai ni, ru di masha ni, hpang na ningbaw ningla tai wa na ram-ma shayi shadang, dinghku a kamhpa ging ai kawa la ni hte kanu num ni hta rai nna, Amyu sha ni a shawnglam myit mada lam hpe hkrit tsang na madang shabyin ya nga ai re.

## 5. NANGHPAM LUSHA JAILANG LAM

Ka-ni nanghpam lu sha jai lang ai hta Ja maw, Lung Seng maw de gumhpraw tam hkawm ai ni, bungli n lu ai ramma ni, dinghku kata mayak manghkan nga ai ni, dakkasu jawngma ni, Tinang hkum hpaga galaw sha ai amy shayi ni, Shingni hpung kaw lawm ai ni hte KTV hkan bungli galaw ai zawn re ni mung lawm ai. Nanghpam hpe lu sha jai lang ai asak pang ni hta asak naw ram ai ramma ni hte dakkasu ma ni grau lu sha ai hpe mu lu ai. Ka-ni nanghpam lu sha jai lang, hkai, galaw shapraw, dut ginlen wa ai a ningpawt gaw, chyam yu, pyaw chyai mayu ai, Ka-ni nanghpam hpe aloi sha lu la mai ai, Ja gumhpraw tam loi ai, bungli madung n lu ai hte Ja gumhpraw yak, dinghku bau ra ai ni a majaw re hpe mu lu ai.

*“Asak (24) rai sai, dinghku hte rai sai, ma langai lu ai. Lung Seng Chyau Poi Poi ai bungli galaw ai, Jinghpaw re, Hpakant, Aye Mya Tar Yar Lawk (7) kaw nga ai, Nanghpam lu sha ai (2) ning rai sai. Ka-ni hpraw hte yama hpe lu sha jai lang ai. Lani mi kade ngu hku gaw n re, kalang lu yang Taik-Nga-Lone (1), Lani mi (2, 3) lang lu ai ten mung nga ai. Taik-Nga-Lone (1) gaw 3000/- re. Nam Maw kaw na sengke hte ngai nan sa mari ai. Ndai EVER Shingbut kaw Moekar ginsum ni law law nga ai, dai ni yawng re gara seng kaw tim sa san dat u nga ai. Dai makau kaw Hpyen Dap langai nga ai. Balik Dap mung nga ai. Ngai gaw Yaw –Tu- Ma ni kaw nna mari la ai. Ka-ni nanghpam hpe gara kaw na du wa ai chyawm gaw n chye ai. Anhte gaw Nam Maw kaw na sa la ai sha re.” (San/htai: Nanghpam lu sha ai masha, Hpakant)*

Ka-ni nanghpam lu sha jai lang ai ni yawng ngu na daram, n lu mat hkra dawn ai lam hta grai yak hkak ai hpe mu mada lu ai, kade lang dawn yu tim mung, Ka-ni nanghpam kaw na lawt lu ai lam n nga ai hpe mu mada ai. Kalang mi dawn ngut ai hpang bai lu ai shaloi, shawoi lu sha ai shadang hta htam mi htam lahkawng jat lu wa ai hpe mu lu ai.

*“Asak (26) ning re, dinghku n de shi ai, nta masha marai (6) re. Nga shara Hopin Wa Kawng kaw re, lu sha ai gaw (3) ning na sai, Nanghpam lu sha ai hpan gaw Yama hte Ka-ni hpraw re, lani mi Taik-Nga-lone (1.5) bu re, lani mi lu sha ai manu gaw 10,000 hte 20,000 lapran kaw nga ai. Sa mari lu ai shara gaw Nan Yin Te-Hpyu-Chaung kaw re dut ya ni gaw Aung Thu-kha hte Tar Nge yan re. Pat Jasan ni nta kaw na sa woi la nna, Namti Pat Jasan Dawn dabang kaw dawn ya ma ai. Dawn dabang kaw nga ai shata (3) laman gaw n lu sha ai, raitim dawn dabang kaw na le ai hte lu sha ai manang ni hte bai hkrum nna bai lu sha mat ai re.” (San/htai: Nanghpam lu sha ai masha, Hopin)*

Kachin state kata kaw Ka-ni chyang lu sha jai lang ai hpe law dik ai amyugaw Kachin amyuni rai nna, Myen hte Sam amyunumber (2) law dik kaw re hpe mu lu nga ai. Ka-ni hpraw lu sha ai mung Kachin amyuramma ni grau law ai hpe mu lu nga ai. Laiwa sai 2005, 2006 kaw na Myitkyina Dakkasu jawng kaw Ka-ni nanghpam lu sha jai lang ai jawngma ni gaungwi gaungwi law jat wa nna, ya yang jawng wang kata kaw nan dut ya ai lam ni byin nga sai re.

Ka-ni nanghpam lu sha jai lang ai majaw, dinghkrai hte dinghku hta byin pru wa ai lam ni gaw myiman kaji hkrum ai, dinghku, wuhpung wuhpawng hte hka bra wa ai, myit masa kyang lailen hten za wa ai, hkyuk htawng rawng ai, kap bra ana byin hkrum hkra ai, si hkrum ai, hkamja lam, hpajilam hte sut masa lam hkrat sum ai hpe mu lu ai.

## 6. TARA UPADI CHYING RING LAM

Myanmar Mungdan kata hta Ka-ni nanghpam manghkang hpe Myen asuya a tara masa hku nna mung, uphkang masa hku nna mung, Hpyen Dap hku nna mung tang du hkra jum tek hparan ya ai lam n nga ai sha n-ga, Ka-ni nanghpam a tsin-yam hpe tatut hkamsha hkam mana nga ai Mungshawa ni a pat jasan magam bungli ni a ntsa n-gun jaw, madi shadaw karum shingtau ai lam ni hta mung grai gawngkya nga ai re. Mungshawa PJS ni hpe nhtang hku mara tam, jebat ai hte jahkrit shama shagyeng ai lam ni byin nga ai.

Pat jasan bungli shang ai ten hta pat jasan hpung ni hpyen hkrum hkra ai lam ni law law nga lai wa sai. Dai zawn hpyen hkrum hkra ai manghkang mabyin ni hpe sawk maram yu yang, nhtu, nhkyi, la yang (duk) laknak ni hte manghkang tam ai lam (51) lang, masha n-gun hte hkap htim gasat hkrum ai (42) lang mawdaw hte htim gasat hkrum ai (10) lang hte, sinat hte htim gap gasat hkrum ai (6) lang re hpe mu lu ai.

2016 ning, Waimaw Ginra Ka-ni yi dan shamyit masing hte maren, Sadung, Kanpaiti Buga ginra ni de na Ka-ni yi dan shamyit na matu rawt sa wa ai mung shawa PJS hpung ni hpe hkrunlam kaw Shing Jai mare numrawn e hkap gap gasat na matu, dai ginra kata na laknak hpai ai (Pyi-tu-sit) ni, Ka-ni yi galaw ai ni hte mazut luksuk ni hpe laknak htuk ya ai re lam mungshawa pat jasan ni rim la lu ai masha ni kawn na chye lu ai. Dai rai nna, dai mazut luksuk ni gaw, Kanpaiti maga de lung wa ai mungshawa pat jasan hpung ni hpe Shing Jai mare makau hte Wemaw mare kaw laja lana hkap gap gasat wa masai re. Dai zawn hkap gasat ai kaw mungshawa pat jasan hpung ni marai (30) hkala nba hkrum lai wa sai. Hkala nba hkrum ai raitim, asak si sum ai lam n nga ai sha yawng hpe atsawm sha tsi tsi shamai shatsai la lu sai re.

Myanmar Mungdan kata hta Ka-ni nanghpam hpe arang kaba hte hpaga kaba hku hkai, galaw shapraw, dut ginlen ai ni hpe gaw rim ahkyak la ai lam nau n mu lu nga ai, lu rim tim arai sha zing da nna, masha hpe gaw bai dat kau ai lam mabyin masa mu lu nga ai. Ka-ni nanghpam amu hte hkyuk htawng kaw law malawng rawng nga ai ni gaw, lu sha jai lang ai ni, kachyi kachyaw dut sha ai ni hte loili hkai ai ni sha law malawng re hpe mu lu nga ai. Kachin State kaw 2018 January 1 kaw na 2018 December 31 ya laning mi laman hta Ka-ni nanghpam hte hkyuk htawng rawng amu yawng rai yang (2,370) rai nna kaga amu manghkang hta grau law nga ai hpe mu lu nga ai.

*“2015 ning July (1) ya shani Hpakant Ginra Pat Jasan, Lawng Hkang Buga Pat Jasan ni jahpawt daw 11:30 AM daram hta Daw Kai ngu ai Ka-ni nanghpam hpaga kaba galaw ai hpawmi nga ai Lawng Hkang mare, Awng Ra Lawk na nta kaw Ka-ni nanghpam arung arai hte hpawn lu rim ai. Ka-ni nanghpam nkau hpe Modo ntsa kaw na lu rim la nna, nkau gaw store gawk kaw na mu rim la ai re. Lu rim la ai Ka-ni nanghpam ni gaw Ka-ni hpraw sabya kaw (415), penicillin (600), small pipe (1800), big pipe (500) hte Yama tawng (298,600) re.*

*Pat Jasan hpung ni gaw Daw Kai nta hpe wang da nna, shang ai shaloi, kadai mung n shaga ai sha Balik hking n lawm ai Balik Du langai du wa ai. Ndai lawnglam hpe yu yang, Daw Kai hte seng ang ai Myen asuya magam gun ni, Balik ni hte matut mahkai nga ai hpe chye lu ai. Dai nta masha ni ga shaga jak mung lang ai, jak hpe hpaw sagawn yu yang Balik Dap a jak number ni rawng nga ai hpe mu lu ai. Shi hpe rim nna Balik Dap de ap kau sai raitim, ahkyak la ai lam n nga ai hta n-ga ya yang Tamahkan, Se Zin mare kaw bai dut sha nga ai.” (San/htai: Pat Jasan magam gun, Hpakant)*

Ndai Daw Kai (Chyang Maja Kai) a Ka-ni nanghpam amu manghkang hpe yu yang, Myen mungdan a tara je yang ai ladat gaw, Ja gumhpraw hte hparan kau mai nga ai, ngu ai hpe asan sha htawng madun nga ai. Ndai gaw, tara upadi a ntsa kaw Ja gumhpraw power ka-up nga ai masa pru nga ai. Ndai lam byin ai gaw asuya magam gun ni mayun kumhpa law law sha nna, tara upadi hpe tinang kam ai hku jai lang dawdan hparan nga ai masa kumla rai malu ai.

## MANGHKANG SHAYAWM AI LAMANG HTE DAWN DABANG LAMANG NI

---

Kachin state hte lahta Sannung kaw Mungshawa Ka-ni nanghpam pat jasan ai magam bungli hpe 2014 ning kaw nna 2016 ning du hkra shawa n-gun hte galaw hpang wa sai re. Dai shaloi ningmu jahpaw hkaw tsun ai lamang, sadi jaw ai lam ni, dawn jasan ya ai lamang, rim ahkyak la ai lamang ni, Ka-ni yi dan shamyit ai lamang, shawa shamu shamawt ai lamang ni hpe galaw mat wa sai re. Rai yang Ka-ni lu sha ai masha hte hkai, dut ginlen ai masha 10,000 jan hpe ningmu jahpaw hkye la lam galaw ya lu ai. Shawa hku nna hkaw tsun ai lamang hta pat jasan a masing policy ni, Nanghpam hte Tara masa lam ni, Hkamja lam ni, Chyum masa lam ni hpe mung shawa (50,000) lahta hpe ningmu jahpaw hkaw tsun lai wa sai. Ka-ni yi dan shamyit ai lam ni hpe mung Eka (10,000) hku dan shamyit kau lu sai.

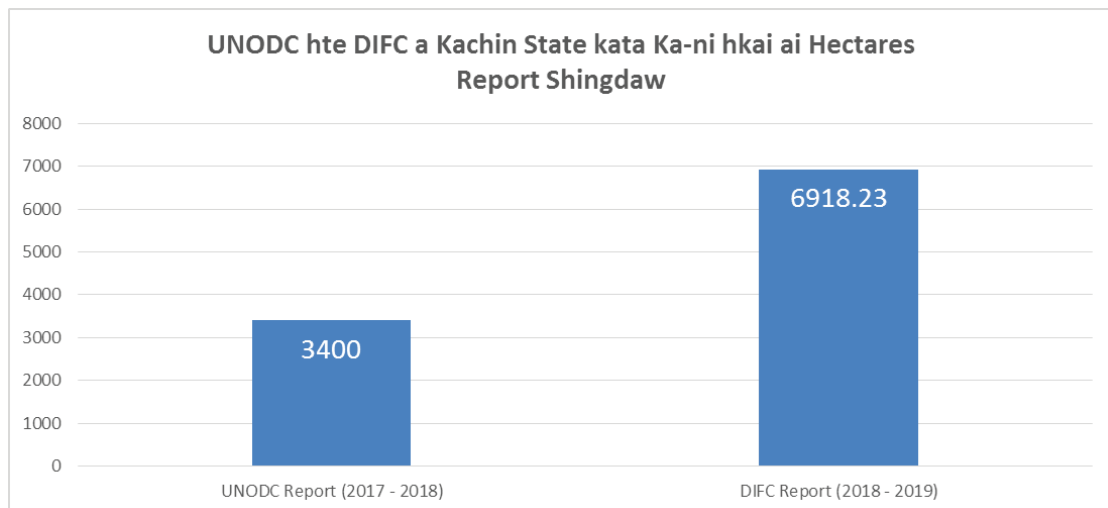
Raitim 2017 shaning ndai daw de gaw Myen asuya ahkang aya lu ai ni, Myen Hpyen Dap, Balik ni kaw na Mungshawa pat jasan bungli a ntsa mara tam jehpre ai majaw, Ka-ni yi dan jasan ai magam bungli, rim ahkyak la nna shadum jahprang ai magam bungli ni hte dawn jasan ai lam ni hpe tang du hkra n lu galaw mat sai re.

2018 – 2019 shaning kaw na gaw ningmu jahpaw ai lamang hpe hkum ding dek sa du jahpaw ai lam, Ma hte Ramma ni hpe tau hkrau makawp maga hpaji jaw ai lam, Ka-ni lu sha, dut sha ai ni hte hkai ai ni hpe shanhte nga ai shara de sa nna ningmu jahpaw ai lam ni galaw la lu sai. Ningmu jahpaw hkam la lu sai masha yawng (43,969) rai nga sai re.

## UNODC A MYEN MUNG NA NANGHPAM SAWK SAGAWN DATA NI HTE SHINGDAW YU AI LAM

2017 – 2018 shaning na UNODC a Ka-ni hkai ai sumtang hpe yu yang, Kachin state hta Danai ginra hte Sadung, Kanpaiti ginra lahkawng hpe sha madung madun dan ai hpe mu lu ai. Bai nna, Dai ginra lahkawng kaw KIA uphkang ai ginra re ngu ai hku nna madun da ai re. Sumprabum ginra hte Putao ginra kaw Ka-ni hkai ai lam n lu madun dan ai hpe mu mada lu ai.

2018 shaning UNODC a Kachin state kata Ka-ni hkai ai sumtang hta tsa lam shadang (percentage) (13%) hku madun da nna, hectare hku rai yang (3400) re hpe mu lu nga ai. 2019 shaning DIFC a Ka-ni hkai ai sumtang kaw gaw Kachin state kaw hectare (6918.23) rai nna, UNODC a sumtang hte shingdaw yu yang hta mi tsaw jat wa ai hpe mu mada lu nga ai. Lawu na chart sumla gaw UNODC hte DIFC a Kachin state ginra na Ka-ni hkai ai hectare hpe shingdaw dan ai chart re.



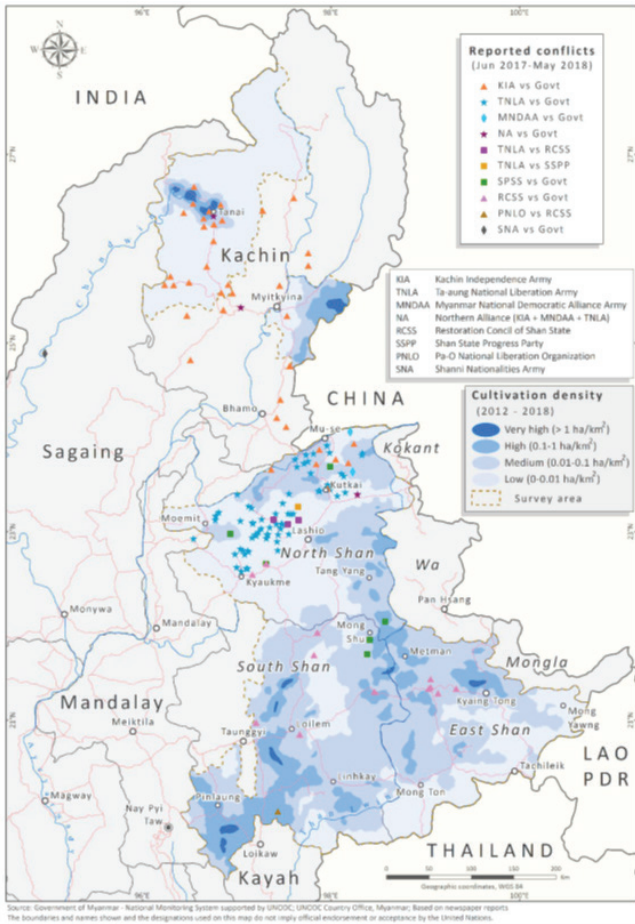
2018 April shata kaw na Kachin state kata Ka-ni hkai ai Danai, Shingbwi Yang, Sumprabum hte Putao ginra ni gaw Myen asuya Hpyen Dap kawng gasat zing madu la kau nna, Hpyen Dap hte post ni dap jung shara la jum tek nga sai ginra ni re. Myen Hpyen Dap garai n nga ai ten e, dai shara ni kaw Ka-ni hkai ai lam nau n mu lu ai. Bai nna, Sadung hte Kanpaiti ginra kaw mung Myen Hpyen Dap, Balik, BGF, Pyi-tu-sit ni a tatut jum tek uphkang gawn hkang nga ai ginra ni re.

Lahta Sattung (Kachin Sub-state) ginra de mung, Myen Hpyen Dap kawng EAOs ni a shara ni hpe gasat zing madu la da ai shara grau law mat sai. Dai ginra de mung Pyi-tu-sit wuhpung wuhpawng hpan hkum hkra uphkang ai ginra ni rai nna, Pyi-tu-sit wuhpung wuhpawng ni hpe Myen asuya Hpyen Dap kawng dan tawk jum tek uphkang hparan hpareng jum ai rai nga ai.

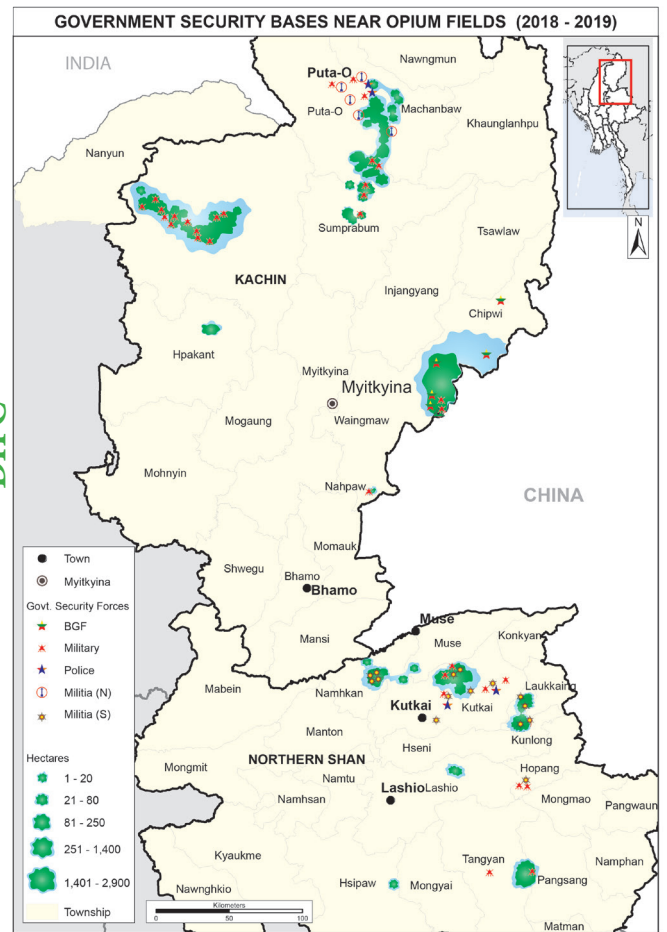


BGF hpe gaw Myen asuya Hpyen Dap kawm budget jahkrat ya nna, madi shadaw nga ai rai nna, Pyi-tu-sit ni hpe gaw budget alak mi jahkrat ya ai lam n nga ai sha, ja gumhpraw tam la na ahkaw ahkang lam masan jaw ya ai hpe mu mada lu ai.

Lawu na sumla gaw, UNODC sawk sagawn la lu ai Ka-ni yi sumla hte DIFC ni sawk sagawn la lu ai Ka-ni yi sumla hpe shingdaw madun dan da ai re.



UNODC  
DIFC



Lahta na Ka-ni hkai ai ginra hpe yu yang, UNODC a sumtang hta nkau ginra ni kaw EAOs ni a ginra ni hta Ka-ni hkai ai hpe htawng madun dan nga ai. UNODC a Ka-ni hkai ai a ntsa data hta shinggyin ai gaw, tatut hta byin nga ai mabyin mateng ni hpe madung ningpawt tawn mahtai n tam ai sha, EAOs wuhpung wuhpawng ni hpe mara kata mara shagun mayu ai sat lawat hpe shabyin ya nga ai. Bai nna, ya yang na Munghpawm Myanmar mungdan a mung masa simsa lam gawgap nga ai lam yang hta ahkyak kaba rai nga ai EAOs hte Myen asuya Hpyen Dap lapran shada makam gawgap ai lam hpe ahtu hkra jahten kau ya na matu grau numshawn jaw ai sumtang re hpe mu mada lu ai.



## DINGLIK GINCHYUM AI LAM

---

Ka-ni hte nanghpam hpan amy myu madung pru wa ai ru pawt shara gaw Northern Shan state and Kachin state kata na Pyi-tu-sit hte BGF uphkang ginra ni rai nga ai lam adan aleng mu lu nga ai. Kachin State kata na Myen asuya Hpyen Dap ni dap jung ai shara makau grup-yin hkan mung Ka-ni hpe wanglu wanglang hkai lu ai lam asan sha mu lu ai.

Pyi-tu-sit ni hte BGF ni a madung hpaga bungli kaba gaw Ka-ni nanghpam hkai, galaw shapraw, dut shabra ai lam rai nna, dai zawn n dut n dang galaw nga lu ai lam gaw Myen asuya Hpyen Dap kaw nna, machye mana ahkaw ahkang jaw da ai majaw re ai lam asan sha mu lu nga ai .

DIFC a data hta lawm ai Pyi-tu-sit hte BGF ni gaw Kachin state kata Dangu Tang, Lisu, Sam hkyeng, Tarlaw Pyi-tu-sit ni hte BGF 1002, 1003 ni rai nna, lahta Sammung (Kachin sub-state) kata Panse, Lung Htang, Shau Haw, Tamungne, Nam Jawn, Mungji, Targon, Tang Yan, Kawng Hka, Kuthkai Pyi-tu-sit ni hte Kunlung laksanakan Balik hpung ni rai ma ai. Data n lu hta la ai raitim Ka-ni nanghpam galaw shapraw dut shabra ai ngu mying pru ai Pyi-tu-sit hte BGF ni gaw Lawa Yang, Munggu, Hpawngseng Pyi-tu-sit ni hte BGF 1001 ni rai nga ai.

Ka-ni hkai ai hte nanghpam amy myu galaw shapraw ai bungli a ahkyak ai bungli daw ni hta miwa mungdan na Ka-ni hpaga lauban ni shang lawm nga ai hta n-ga, miwa mung hte myen mung jarit mayan hta mung mungdan lahkawng a Ka-ni nanghpam tara upadi ka-up lu ai lam n nga ai hpe mu lu nga ai.

Ka-ni nanghpam hpe n dut n dang galaw shapraw lu nga ai hte dut shabra lu nga ai lam gaw Myen Hpyen Dap hte Myen asuya magam gun ni Ka-ni nanghpam kaw nna, mayun kumhpa hpe hpaga masa hku nan la sha nga ai lam rai nga ai ngu mu lu nga ai.

Myen asuya hpe rawt malan nga ai amy ni a n-gun kya mat wa hkra Ka-ni nanghpam hpe laknak langai hku jai lang ai masa mung lawm nga ai hpe mu lu ai.

## NINGMU JAW AI LAM

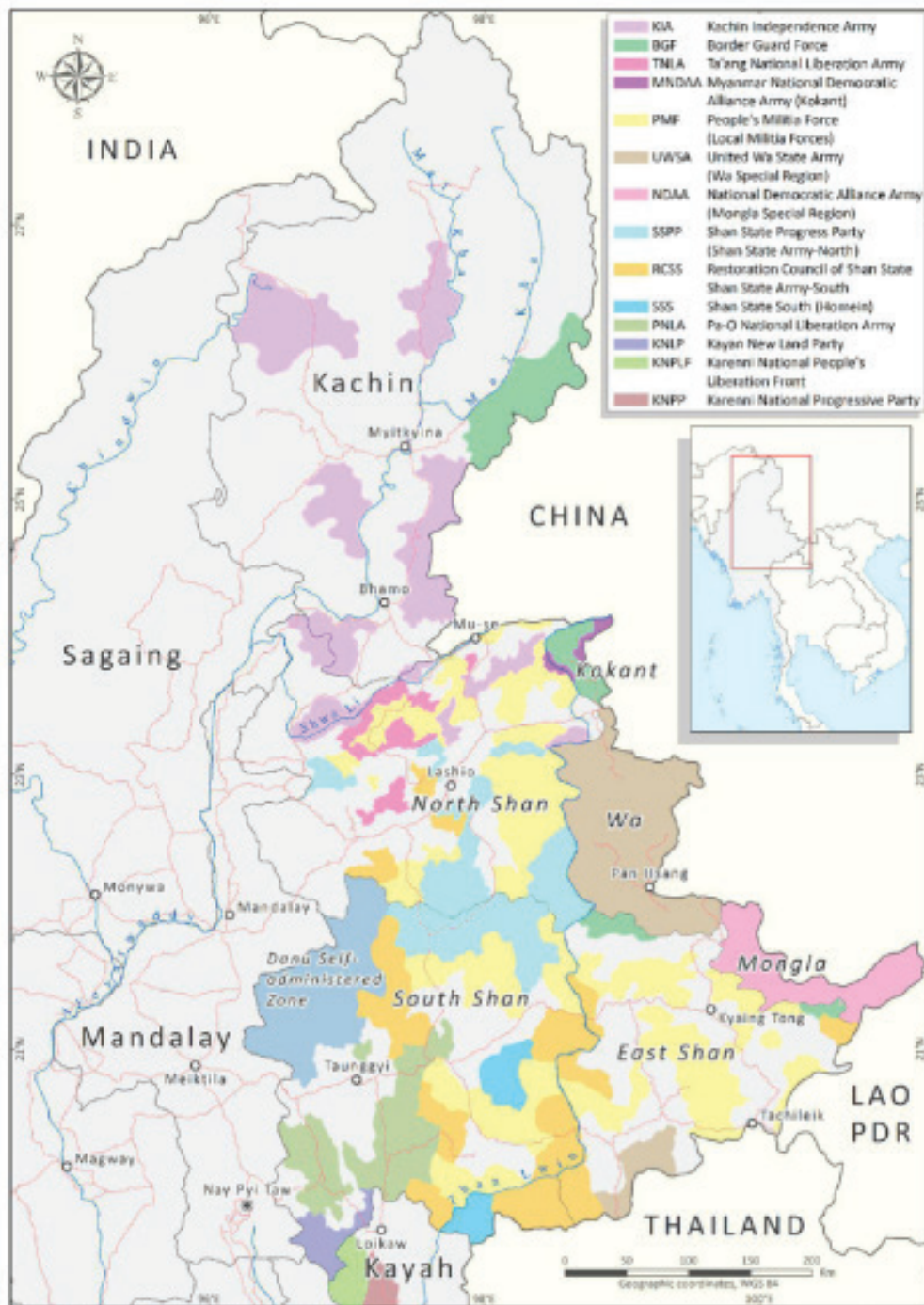
---

1. Ka-ni nanghpam manghkang a ningpawt rai nga ai Pyi-tu-sit hte BGF ni hpe Ka-ni nanghpam galaw shapraw lu na matu ahkaw ahkang hpaw makawp maga ya nga ai Myen Hpyen Dap a tara tawt lai ai uphkang masa hpe tsep kawp dawm pat kau ra ai.
2. Myen asuya kaw nna, Ka-ni nanghpam hte seng ai tara upadi ka-up lam hpe tang du hkrang pru hkra lit la galaw ra ai hte Ka-ni nanghpam bungli kaw na mayun kumhpa sha nga ai Myen asuya magam gun ni hpe mung ja ja ahkyak la jasan kau ra ai.
3. UNODC zawn re ai Mungkan wuhpung wuhpawng ni kaw nna mung, Myen asuya a uphkang masa kata hta byin nga ai Ka-ni nanghpam manghkang ni a teng man ai lam ni hpe lu la hkra tang du du sawk sagawn nna, Myen asuya hpe sadi jaw ai lam, Ka-ni nanghpam pat jasan lam hta n-gun dat na matu shadut ai lam ni galaw ra ai.
4. Mungshawa ni myit dum hprang let myit su myit rawt galaw nga ai Ka-ni nanghpam pat jasan bungli hpe tara upadi ga baw hte shagyip shagyeng jahkrit shama mara tam dingbai dingna jaw ai lam n galaw ai sha madi shadaw n-gun jaw ai lam mahtang galaw ra ai.
5. Myen asuya mung mungdan kata byin nga ai Ka-ni nanghpam manghkang ni hte seng nna, laknak lang ai rawt malan wuhpung wuhpawng ni a ntsa jawat jahpai ai lam ni nga ai re majaw, amyua sha rawt malan hpung ni hte mung masa pri nem hkra lawan bawngban nna, Ka-ni nanghpam pat jasan bungli hpe mungdan ting lahkrip ra ra jawm n-gun dat galaw ra ai.

## APPENDIX

- UNODC a report rai nga ai Myanmar Opium Survey 2018 hpe npu e jaw da ai website link hta shang yu hti mai ai.  
[https://www.unodc.org/documents/crop-monitoring/Myanmar/Myanmar\\_Opium\\_Survey\\_2018-web.pdf](https://www.unodc.org/documents/crop-monitoring/Myanmar/Myanmar_Opium_Survey_2018-web.pdf)
- UNODC a sumtang kaw na Lamu ga sumla (map) ni

**Map 2: Armed groups in Myanmar, 2017-2018 opium poppy growing season**



Source: National Forest Crop Monitoring System supported by UNODC. The boundaries and names shown and the designations used on this map do not imply official endorsement or acceptance by the United Nations.

- UNODC a sumtang hpe ninghkap ka ai KIO a Open letter

De,

Jeremy Douglas  
Regional Representative  
Southeast Asia and the Pacific

**GINLAM;- UNODC a Myanmar Opium Survey 2018 hta KIA hpe mara shagun mying jahpoi da ai hpe KIO ninghkap ai lam.**

2019 ning, January 11 ya shani, UNODC gaw shanhte a “Myanmar Opium Survey 2018” sumtang laika hpe shabra dat ai hpe mu lu ai. Dai sumtang hta ntsa lam yu yang Myengmung ting kani hkai ai shadawn shadang yawm hkrat wa ai, Jinghpaw Mung hta nan 13% yawm wa ai nga tang madun da ai. Dai kaw madi madun da ai hta matut nna ka-ni hkai shapraw taw nga ai gaw majan byin gasat gala hte matut hkridun nga ai lam: “Jinghpaw Mung kaw ka-ni hkai shadang law dik ai gaw **KIA uphkan ai ginra ni hta rai nga ai**” nga ka da ai.

KIO gaw ndai zawn mara shagun ai lam hpe, ja ja ninghkap ga ai. UNODC ni madun da ai lamu ga sumla map ni nan dai sumtang hte n htan shai nga ai lam hpe mung madi madun mayu ai.

Laika man 6 kaw na Map 1 “*Kani hkai shadang madun ai sumla (2013-2018) hte June 2017-May 2018 lapran na Myenmung kata majan nhpan byin ai lam*” ngu ai hta Jinghpaw mung kata ka-ni hkai shadang law dik ai ginra ni gaw Danai hte Myitkyina sinpraw maga na Sadung ginra re nga madun da ai.

Maga mi hta, laika man 7 kaw na Map 2 “*2017-2018 ka-ni hkai ladaw na Myen mung kata laknak lang hpung ni a nga shara*” ngu ai hta, Jinghpaw mung kata KIA hte Myen mung asuya hpyen dap, BGF ni a ginra ni hpe garan ginhka madun da ai. Ndai sumla kaw ka-ni hkai shadang law dik ai Sadung ginra ngu ai gaw, KIA ni uphkan ai ginra n re ai sha, Myen asuya hpyen dap, BGF ni uphkan ai ginra kata kaw re hpe asan sha mu lu ai.

Bai nna, Map 1 kaw madun da ai ka-ni hkai shadang law dik rai nga ai Danai ginra gaw teng sha nga yang, Myen hpyendap Regional Operation Command (ROC) ni nan dung nga ai Danai mare grupyin, Myen hpyendap ni hte asuya a Pyitutsit (militia) dabang ni hte grai ni kahtep ai shara ni she re. “Laknak lang wuhpung wuhpawng” map (Map 2) hta Myen hpyendap a nga shara ni hpe n madi madun da ai majaw majan byin ai hte ka-ni hkai ai lam a lapran na mahkri shawn hkridun nga ai lam hpe madi madun ai hta magaw manai kau ai lam sha rai nga ai ngu mu lu ai.

KIO hku nna, amyua sha ni a matu ka-ni gaw hkrit tsang hpa hpyen madung langai re hpe dum chye ga ai hte, 1993 ning kaw nna Nanghpam Pat Jasan Komiti hpaw nhtawm, tinang dephkap uphkan lu ai ginra kata hta ka-ni yi hkyen jasan ai, dut mari ai



ni hpe sharin shaga ai, hte lu sha ai ni hpe dawn jasan ai bungli ni laja lana n-gun dat galaw taw nga ai re.

Dai majaw KIO gaw UNODC a ngangkang ai sakse n-nga ai sha anhte hpe n jaw n-ang ai hku mara shagun tsun jahpoi ai lam hpe ja ja ninghkap ga ai. UNODC ni hku nna ndai zawn galaw ai lam a shingdu na myit jasat hpe mung mau nga ga ai. KIO gaw, UNODC hte bungli ginrun galaw nga ai Myen asuya a Central Committee for Drug Abuse Control a myit ra ai hpe hkan ya ra ai majaw rai na re ngu myit la lu ai.

UNODC a Director of Operations rai nga ai Miwa Kato gaw, Myanmar Opium Survey 2018 hpe shiga dap ni hte shachyen ya ai lamang hta “..... anhte gaw UN hku nna madi shadaw shakut taw ai ngang grin ai simsa lam byin wa lu na lam hpe shanglawm madi shadaw na re” nga tsun ai.

Asan sha tsun ga nga yang, KIO hpe ngangkang ai sakse n-nga ai sha mara shagun tsun jahpoi let Myen asuya maga tsap lawm ai lam gaw simsa lam tam ai bungli hpe, madi shadaw ai lam n-re ai sha, dingbai dingna jaw ai lam sha tai nga ai.

Dai majaw, KIO gaw UNODC hku nna Myanmar Opium Survey 2018 hta lawm taw ai KIA hte seng ai n-jaw n-teng ai lawnglam ni hpe sharai kau nhtawm, dai zawn shut shai mat ai lam shawa man hta ndau shana ya na matu shadut dat ga ai.

Ninggawn Amu Madu

Wunpawng Mungdan Shanglawt Hpung

**Annex;-**

Myanmar Opium Survey 2018, Page 6 - Map I, Page 7 - Map II.





**KA-NI NANGHPAM MABYIN LAM SAWK SAGAWN HPUNG**

WUNPAWNG MUNG DAN HTE LAHTA SAMMUNG **SUMTANG** 2018 -2019

**GINJAW KA-NI NANGHPAM PAT JASAN KOMITI, KIO**

Contact No : +86 159 6923 6886

Email : [ginjaw\\_patjasan@yahoo.com](mailto:ginjaw_patjasan@yahoo.com)

Date : **26<sup>th</sup> June, 2019**